

PENROSE

ENDLESS AWE



ENDLESS AWE

At Penrose, the levels of luxury are always in balance. The splendour of crafted nature within, the vigour of cityside living close by, and the convenience of the East in proximity – such is a residence catered to your every pursuit. This is Penrose.

ARCHITECTURAL POETRY



IMPRESSIVE FROM ALL ANGLES

A facade that reels in admiration, a structural rhythm that pulsates across the district. Penrose comprises five 18-storey towers encompassing 566 residential units, merging to form a landmark forged with architectural excellence. Prominence shaped to perfection.

YOUR ARRIVAL

AN ALLURING ENTRANCE WELCOMES YOU BACK

The charm sets in the moment you come home. An elegant welcome lobby serves as a segue between the surroundings and your abode, providing easy drop-off access while making splendid first impressions.



ELEMENTS AND LANDSCAPES

FACILITIES CARVED IMPECCABLY FOR BOTH TRANQUILITY AND THRILLS

Inside, the elements are harnessed for mesmerising landscapes. Nature pervades the blueprint of recreation, influencing entertainment enclaves with floral textures and aquatic features, crafting an oasis skirted within urban comforts.



Artist's impression

LET THE LUXURY SINK IN

Switch off and float on. Start your day with a dip in the shimmering 50m swimming pool, stretched along a serene pool deck. The majestic treehouse pavilion peers over it, a stunning landmark of the residence that never ceases to impress.

A TAPESTRY OF RECREATION THAT STRETCHES THE IMAGINATION

From the lush verdancy of the wellness garden and sky marsh land, to the zipline and aqua play area of the kid's adventure park, the facilities of Penrose provide a palette of lifestyle activities catered to both thrills and solace.



STYLED GATHERINGS



WHERE ENTERTAINMENT EXCELS FOR YOUR GUESTS AND FAMILY

Host a stylish get-together for the milestones that matter. Pamper your guests in the gourmet pavilion that overlooks a view of the aqua bubbling deck, suitable for unforgettable occasions of all sorts.

CLIMATIC PINNACLE



Artist's impression

STUNNING RESPLENDENCE REACHES NEW HEIGHTS

As the sun dips, the facade of your residence lifts its allure higher. Crowned by an idyllic summit that impresses from afar, the rooftop is a skyward escape that's perfect for social fetes and instant retreats.

SKY GARDEN PEAK WITH AN UNBLOCKED VIEW

Marvel at the city skyline or have a bubbly toast beneath fireworks. The sky garden is a tranquil habitat tailored for opportune moments, flaunting a panoramic vista that always evolves.



GAZE
FURTHER

PENROSE

PAYA LEBAR MRT
PAYA LEBAR QUARTER

EAST COAST PARK

GEYLANG
METHODIST SCHOOL

ALJUNIED
MRT

NEXUS INTERNATIONAL
SCHOOL

SIMS VISTA MARKET
& FOOD CENTRE

SINGAPORE
SPORTS HUB

MARINA BAY
SANDS

CENTRAL BUSINESS
DISTRICT



Artist's Impression

ON THE FRINGE OF
URBAN VIGOUR

Bask in the buzz of the city at a comfortable distance. Located in District 14, known as the Rest of Central Region (RCR) of Singapore, Penrose offers you proximate connectivity without the intrusive bustle of metropolitan life.

CENTRAL CURIOSITY

PENROSE



EMBARK ON EXPLORATION IN ALL DIRECTIONS

With an address that rests on the city fringe, no destination is out of reach. Surrounded by a network of nearby expressways and public transport routes, your daily journey always has the potential for limitless discovery.



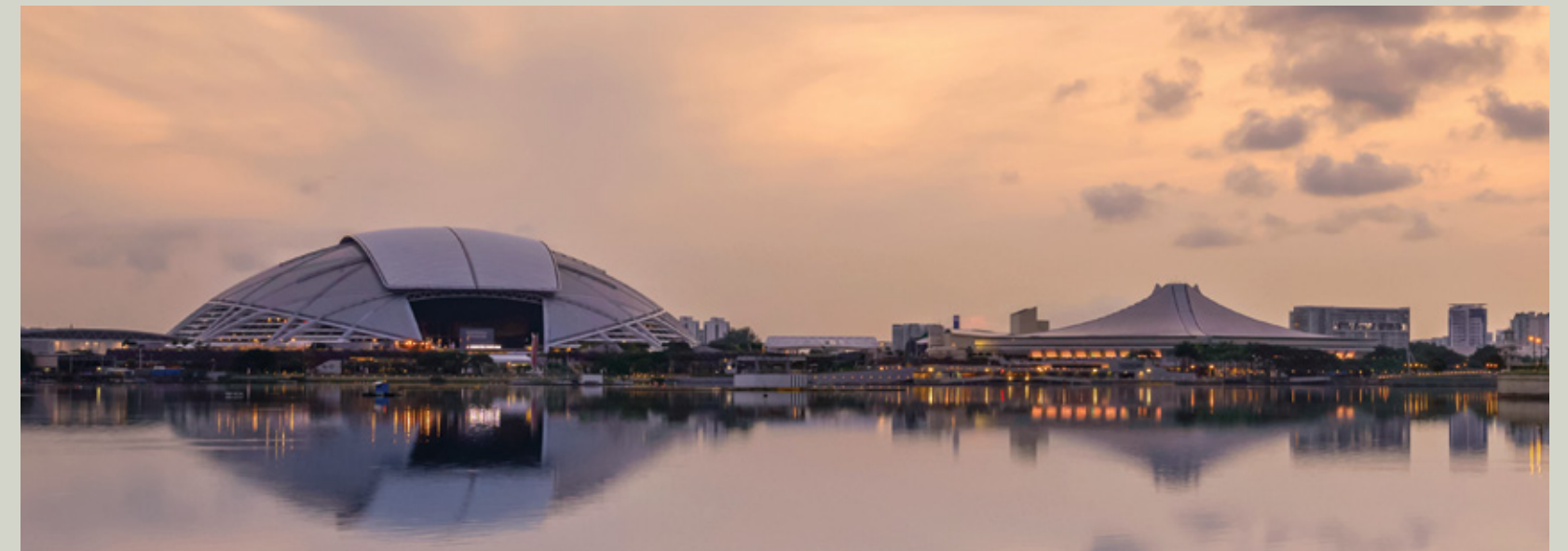


EBB AND FLOW



A BLOOMING TRANSFORMATION UNDERWAY

Rejuvenation of the Kallang River precinct is on the horizon. Picture an invigorated waterfront with new walkways and cycling routes, and the ever-evolving vibrancy of Kampong Bugis as a recreational hub for culture, food and entertainment, while buttressing active mobility and environmental sustainability.



ROAM FREELY IN THE CURRENT OF NATURE

Venture into green corridors and seaside retreats galore with the proximity of East Coast Park. Groomed for nature enthusiasts and active lifestyles, it is a sanctuary that always offers a breath of fresh air.

FEASTS NEARBY



TUCK INTO HEARTY LOCAL FARE

A foodie's paradise of hawker culture simmers nearby, with Sims Vista Market & Food Centre, Haig Road Market & Cooked Food Centre and Old Airport Road Food Centre whipping up beloved local dishes.



RELISH THE ENTICING ART OF GASTRONOMY

Crave a delectable fine dining affair or brunch in a snug cafe? Be spoilt for choice with plenty of scrumptious food establishments in the neighbouring Katong and Joo Chiat districts, appealing all ravenous appetites.





A CHILD CARE CENTRE ON THE PREMISES TO FOSTER EARLY EDUCATION AND NURTURE YOUNG MINDS.



- Geylang Methodist School
- Canossa Catholic Primary School
- Kong Hwa School
- St. Margaret's Primary School
- James Cook University Singapore

CEASELESS CONVENIENCE



- Paya Lebar Quarter
- Paya Lebar Square
- SingPost Centre
- KINEX
- Kallang Wave Mall

RIGHT THERE FOR YOUR DAILY RHYTHM

Whether it's the groceries or sending your little one off to school, your everyday needs are thoroughly catered for. The diverse stores of PLQ Mall are also a stop away, taking care of all your shopping necessities while opening a world of opportunity for career-seekers.

BUGIS
3 STOPS



PAYA LEBAR
1 STOP



RAFFLES PLACE
5 STOPS

SEAMLESS TRANSITIONS

JEWEL CHANGI AIRPORT
7 STOPS



A NETWORK OF BRISK CONNECTIVITY

With Aljunied MRT Station just a short stroll away, you can find unhurried relaxation in every outing. You are merely stops away from major interchanges, granting you fuss-free transfers to all train lines.



BAYFRONT
5 STOPS

HOME FOR THE LITTLE JOYS AND BIG MOMENTS

Where all the lasting memories are forged. Enter an expansive living area that accentuates spaciousness and versatility, giving you the freedom to craft your home according to all your discerning preferences.

SPACIOUS SPLENDOUR



EFFORTLESSLY
COMFORTABLE



For illustration only



For illustration only

LIVE WITH PREMIUM CREATURE COMFORTS

Designed for optimum comfort and class, your home is meticulously fitted with furnishings that heighten every nook and cranny. Your entertainment space even transitions smoothly into an equipped kitchen with a roomy layout, providing easy manoeuvrability within.



For illustration only

UPLIFTING DOWNTIME



For illustration only

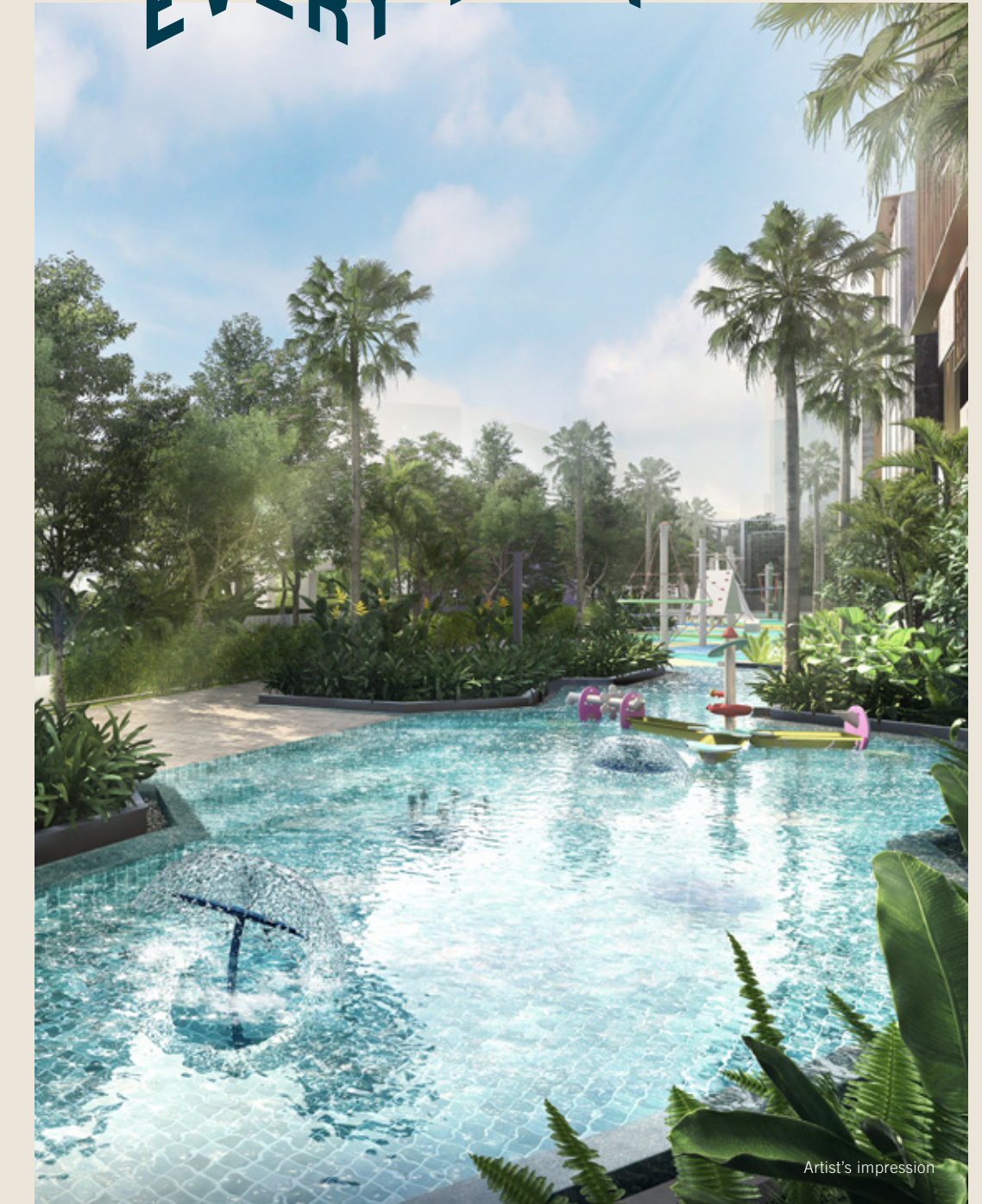


For illustration only

COSINESS IN ALL CORNERS

Wake up and wind down with all the comforts you need. With one to four-bedroom units available, Penrose is a perfect fit for any family. Bedrooms are crafted functionally with space in mind, filled with smart storage shelves and compartments for organising without cluttering.

WONDER AT EVERY TURN



Artist's impression

Abundant and all around, the bounties of recreation are infinitely rewarding. Just a hop and skip away from your front door, lies paradisiacal zones that you'll return to over and over again.

SITE PLAN

FACILITIES AT 1ST STOREY:

- a** Grand clubhouse, consisting of:
 - Arrival dropoff
 - Welcome lobby
 - Waterfall
 - Multi-purpose rooms with toilet (2 nos)
 - Library
 - Star gazing lawn
 - Games room
 - Music room
 - Multi media room
 - Male & female toilets
 - Accessible toilets (2 nos)
- b** Treehouse pavilion with water terrace
- c** The lawn
- d** 50m swimming pool (surfacing area approx. 510m²) with pool decks
- e** Stream pool, consisting of:
 - Lagoon pool (surfacing area approx. 110m²)
 - Forest pods (3 nos)
- f** Active clubhouse, consisting of:
 - Gym (upper storey)
 - Yoga deck (upper storey)
 - Pool deck
 - Changing rooms (male and female changing room, each with steam room)
 - Accessible toilet
- g** Picnic lawn
- h** Fitness lawn
- i** Leisure lawn
- j** Taichi lawn
- k** Yoga lawn
- l** Wellness garden, consisting of:
 - Mist trail
 - Spa pavilions (2 nos)
 - Boardwalk
- m** Kid's adventure park, consisting of:
 - Kid's aqua play (surfacing area approx. 60m²)
 - Kid's jumping water jet
 - Zipline
 - Adventure playground
- n** Tennis court (1 no, hard court)
- o** Fern court
- p** Bamboo court
- q** Haleconia court
- r** Cascading garden walk
- s** Adult fitness station
- t** Pedestrian side gate
- u** Bicycle parks (2 nos)
- v** Guard house
- w** Generator
- x** Bin centre (basement)
- y** Substation (basement)
- z** Child care centre (1st storey & basement)
- aa** Child care centre's dropoff
- bb** Child care centre's parking
- cc** Entry & exit to carpark (basement & MSCP)
- dd** Entry & exit to substation and bin centre (basement)

FACILITIES AT ROOF OF MSCP:

- ee** Leisure deck, consisting of:
 - Lap pool (surfacing area approx. 140m²)
 - Aqua bubbling decks (3 nos)
 - Water decks (2 nos)
 - Pool lounges (2 nos)
- ff** Gourmet pavilion (with bbq pit)
- gg** Dining pavilion (with bbq pit)
- hh** Wine & chill pavilion
- ii** Sky marsh land, consisting of:
 - Boardwalk
 - Bioswale
 - Equisetum pond

FACILITIES AT 18TH STOREY OF BLOCK 30:

- mm** Sky dining pavilion, consisting of:
 - Cooking counter (with bbq pit)
 - Alfresco dining
- nn** Starlight lounge
- oo** City view lounge
- pp** Accessible toilet

LEGEND

- 1-BEDROOM
- 1-BEDROOM (with Study)
- 2-BEDROOM
- 2-BEDROOM PREMIUM
- 2-BEDROOM (with Study)
- 3-BEDROOM
- 3-BEDROOM PREMIUM
- 3-BEDROOM (with Study)
- 4-BEDROOM

Water Tank Position (Roof Level)



SKY GARDEN PLAN



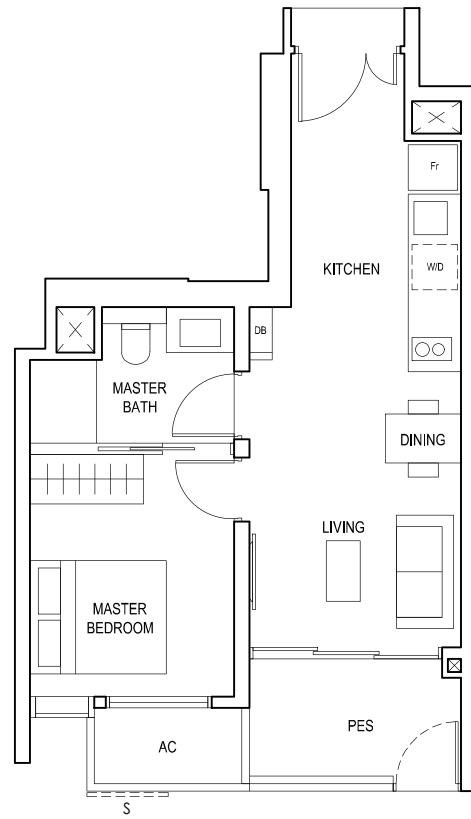
FACILITIES AT 18TH STOREY OF BLOCK 30:

- mm** Sky dining pavilion, consisting of:
 - Cooking counter (with bbq pit)
 - Alfresco dining
- nn** Starlight lounge
- oo** City view lounge
- pp** Accessible toilet

1-BEDROOM

TYPE (1)a1

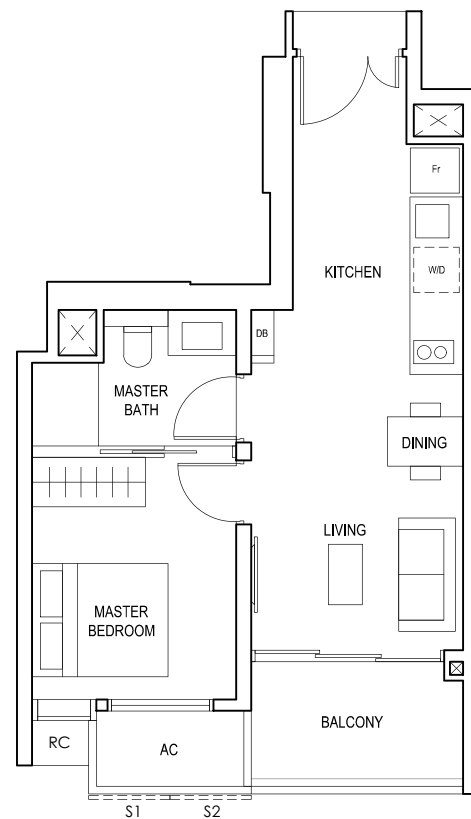
#01-05
45 sq m



S - FULL HEIGHT ALUMINIUM PERFORATED SCREEN

TYPE (1)a

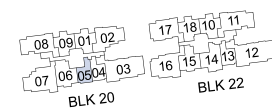
#02-05 to #18-05
45 sq m



FULL HEIGHT ALUMINIUM PERFORATED SCREEN LOCATED AT LEVELS:
S1 - #03, #05, #07, #09, #11, #13, #15 & #17
S2 - #02, #04, #06, #08, #10, #12, #14, #16 & #18

LEGEND:
Fr - FRIDGE DB - DISTRIBUTION BOARD W/D - WASHER CUM DRYER
AC - AIRCON LEDGE PES - PRIVATE ENCLOSED SPACE RC - REINFORCED CONCRETE LEDGE

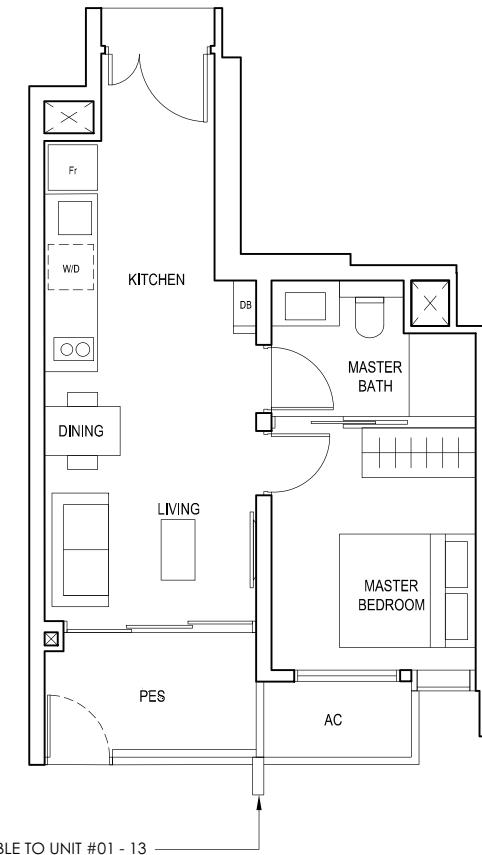
* AREA INCLUDES AIRCON (AC) LEDGE, BALCONY AND PRIVATE ENCLOSED SPACE (PES).
* THE BALCONY/PRIVATE ENCLOSED SPACE (PES) SHALL NOT BE ENCLOSED UNLESS WITH THE APPROVED BALCONY/PES SCREEN. FOR AN ILLUSTRATION OF THE APPROVED BALCONY/PES SCREEN, PLEASE REFER TO THE DIAGRAM ANNEXED HERETO AS "ANNEXURE 1".



1-BEDROOM

TYPE (1)b1

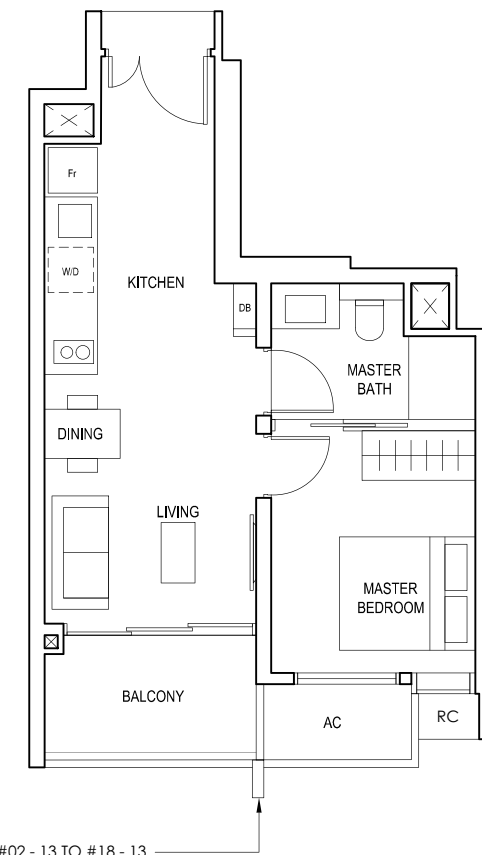
#01-04
#01-13
44 sq m



RC COLUMN ONLY APPLICABLE TO UNIT #01 - 13

TYPE (1)b

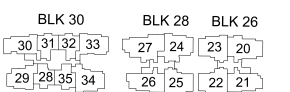
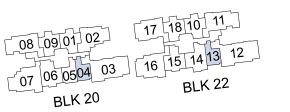
#02-04 to #18-04
#02-13 to #18-13
44 sq m



RC COLUMN ONLY APPLICABLE TO UNIT #02 - 13 TO #18 - 13

LEGEND:
Fr - FRIDGE DB - DISTRIBUTION BOARD W/D - WASHER CUM DRYER
AC - AIRCON LEDGE PES - PRIVATE ENCLOSED SPACE RC - REINFORCED CONCRETE LEDGE

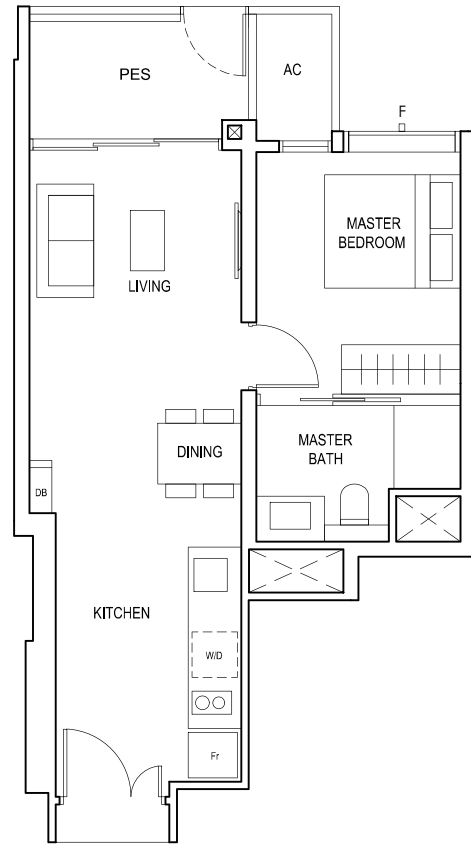
* AREA INCLUDES AIRCON (AC) LEDGE, BALCONY AND PRIVATE ENCLOSED SPACE (PES).
* THE BALCONY/PRIVATE ENCLOSED SPACE (PES) SHALL NOT BE ENCLOSED UNLESS WITH THE APPROVED BALCONY/PES SCREEN. FOR AN ILLUSTRATION OF THE APPROVED BALCONY/PES SCREEN, PLEASE REFER TO THE DIAGRAM ANNEXED HERETO AS "ANNEXURE 1".



1-BEDROOM

TYPE (1)c1

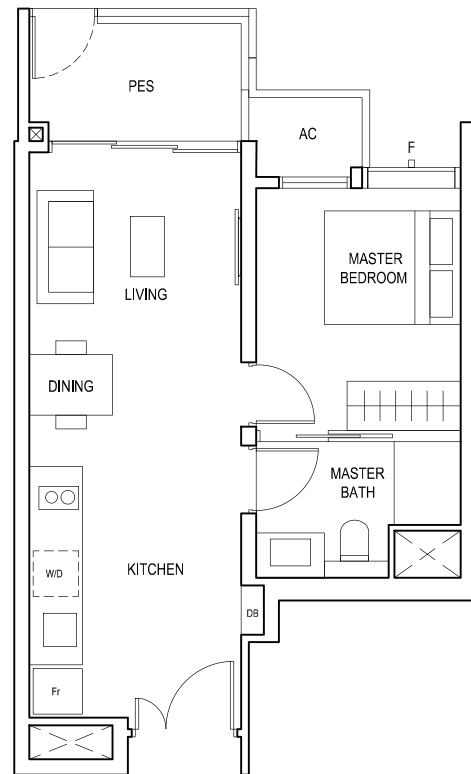
#01-32
48 sq m



F - FULL HEIGHT ALUMINIUM FIN

TYPE (1)d1

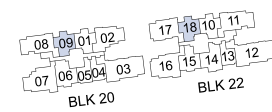
#05-09
#05-18
46 sq m



F - FULL HEIGHT ALUMINIUM FIN

LEGEND:
Fr - FRIDGE DB - DISTRIBUTION BOARD W/D - WASHER CUM DRYER
AC - AIRCON LEDGE PES - PRIVATE ENCLOSED SPACE

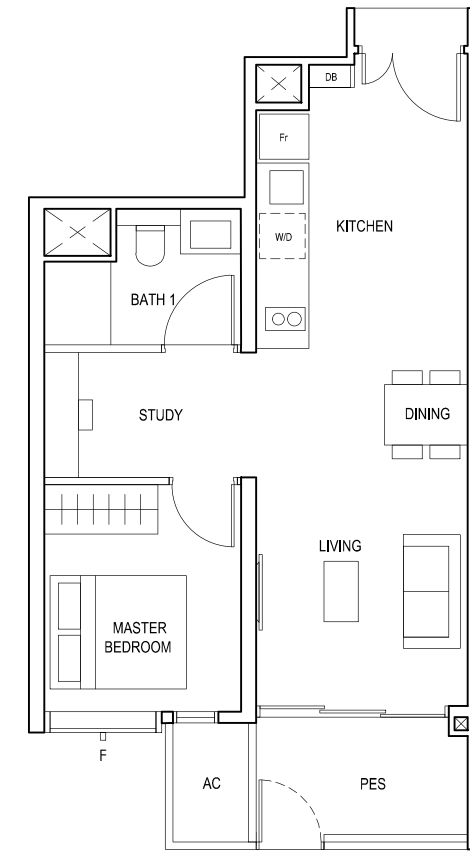
* AREA INCLUDES AIRCON (AC) LEDGE, BALCONY AND PRIVATE ENCLOSED SPACE (PES).
* THE BALCONY/PRIVATE ENCLOSED SPACE (PES) SHALL NOT BE ENCLOSED UNLESS WITH THE APPROVED BALCONY/PES SCREEN. FOR AN ILLUSTRATION OF THE APPROVED BALCONY/PES SCREEN, PLEASE REFER TO THE DIAGRAM ANNEXED HERETO AS "ANNEXURE 1".



1-BEDROOM (with Study)

TYPE (1+1)a1

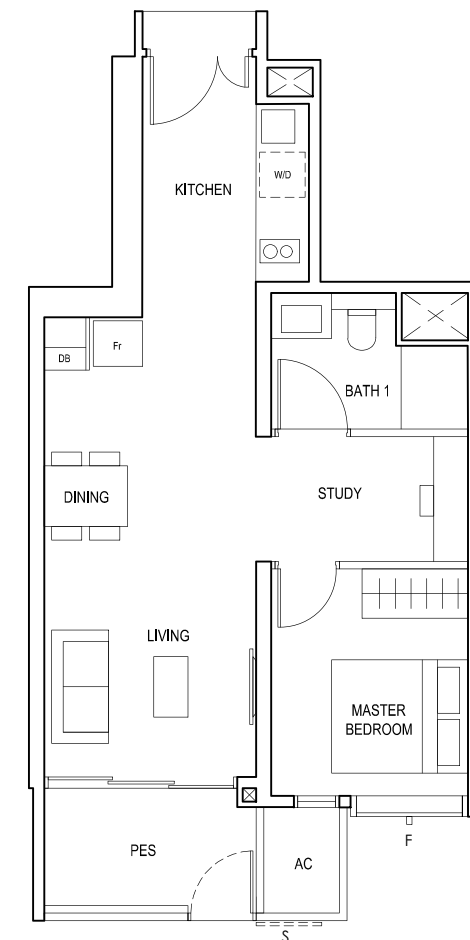
#01-06
52 sq m



F - FULL HEIGHT ALUMINIUM FIN

TYPE (1+1)b1

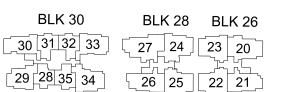
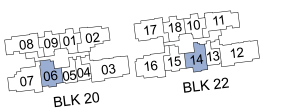
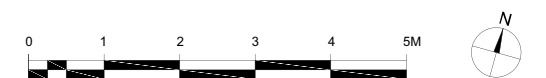
#01-14
53 sq m



S - FULL HEIGHT ALUMINIUM PERFORATED SCREEN
F - FULL HEIGHT ALUMINIUM FIN

LEGEND:
Fr - FRIDGE DB - DISTRIBUTION BOARD W/D - WASHER CUM DRYER
AC - AIRCON LEDGE PES - PRIVATE ENCLOSED SPACE

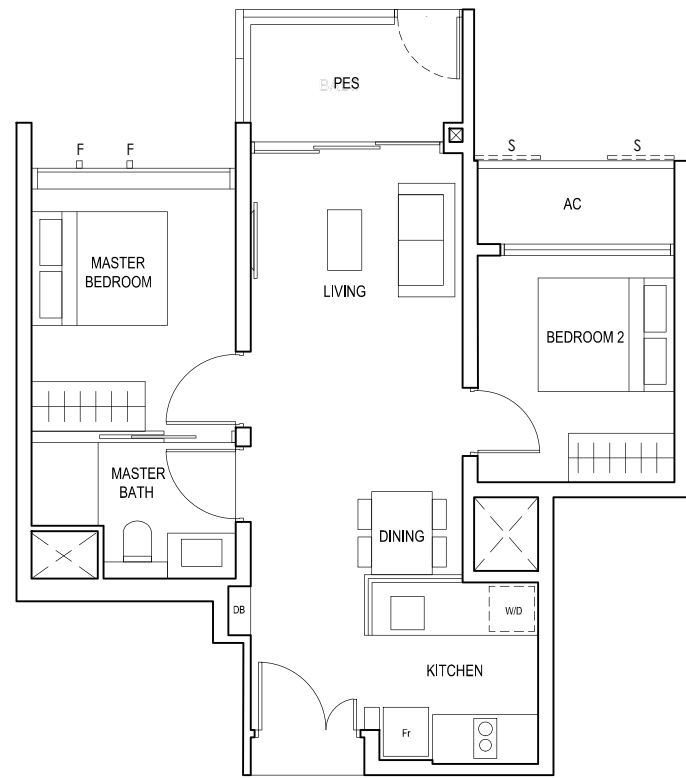
* AREA INCLUDES AIRCON (AC) LEDGE, BALCONY AND PRIVATE ENCLOSED SPACE (PES).
* THE BALCONY/PRIVATE ENCLOSED SPACE (PES) SHALL NOT BE ENCLOSED UNLESS WITH THE APPROVED BALCONY/PES SCREEN. FOR AN ILLUSTRATION OF THE APPROVED BALCONY/PES SCREEN, PLEASE REFER TO THE DIAGRAM ANNEXED HERETO AS "ANNEXURE 1".



2-BEDROOM

TYPE (2)a1

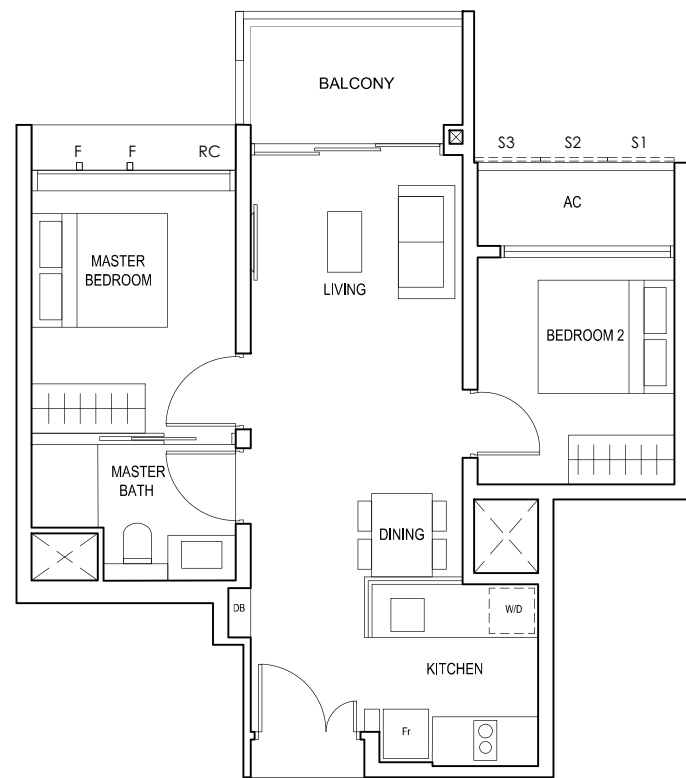
#05-01
#05-10
60 sq m



S - FULL HEIGHT ALUMINIUM PERFORATED SCREEN
F - FULL HEIGHT ALUMINIUM FIN

TYPE (2)a

#06-01 to #18-01
#06-10 to #18-10
60 sq m



FULL HEIGHT ALUMINIUM PERFORATED SCREEN LOCATED AT LEVELS:
S1 - #06, #07, #09, #10, #11, #13, #14, #15, #17 & #18
S2 - #06, #08, #10, #12, #14, #16 & #18
S3 - #07, #08, #09, #11, #12, #13, #15, #16 & #17

F - FULL HEIGHT ALUMINIUM FIN

LEGEND:
Fr - FRIDGE DB - DISTRIBUTION BOARD W/D - WASHER CUM DRYER
AC - AIRCON LEDGE PES - PRIVATE ENCLOSED SPACE RC - REINFORCED CONCRETE LEDGE

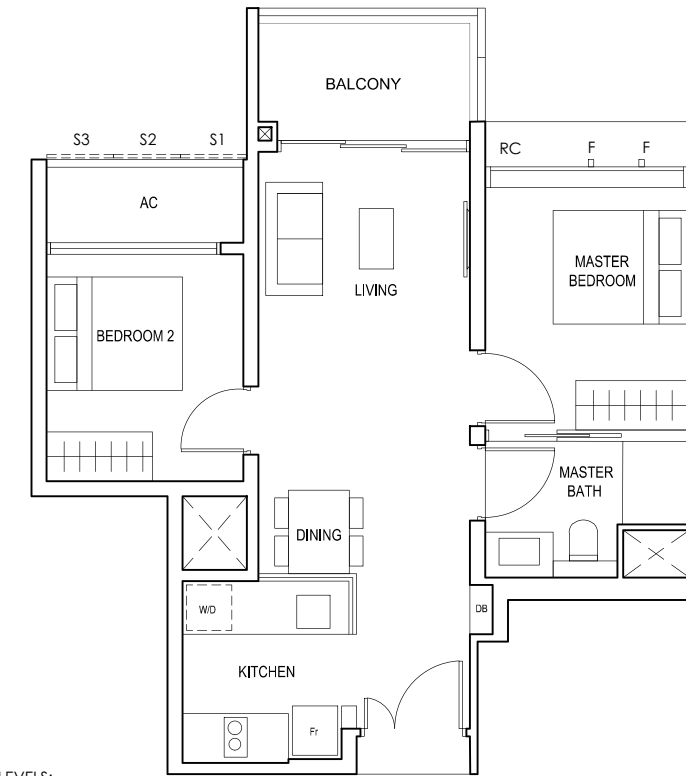
* AREA INCLUDES AIRCON (AC) LEDGE, BALCONY AND PRIVATE ENCLOSED SPACE (PES).
* THE BALCONY/PRIVATE ENCLOSED SPACE (PES) SHALL NOT BE ENCLOSED UNLESS WITH THE APPROVED BALCONY/PES SCREEN. FOR AN ILLUSTRATION OF THE APPROVED BALCONY/PES SCREEN, PLEASE REFER TO THE DIAGRAM ANNEXED HERETO AS "ANNEXURE 1".



2-BEDROOM

TYPE (2)a

#06-09 to #18-09
#06-18 to #18-18
60 sq m

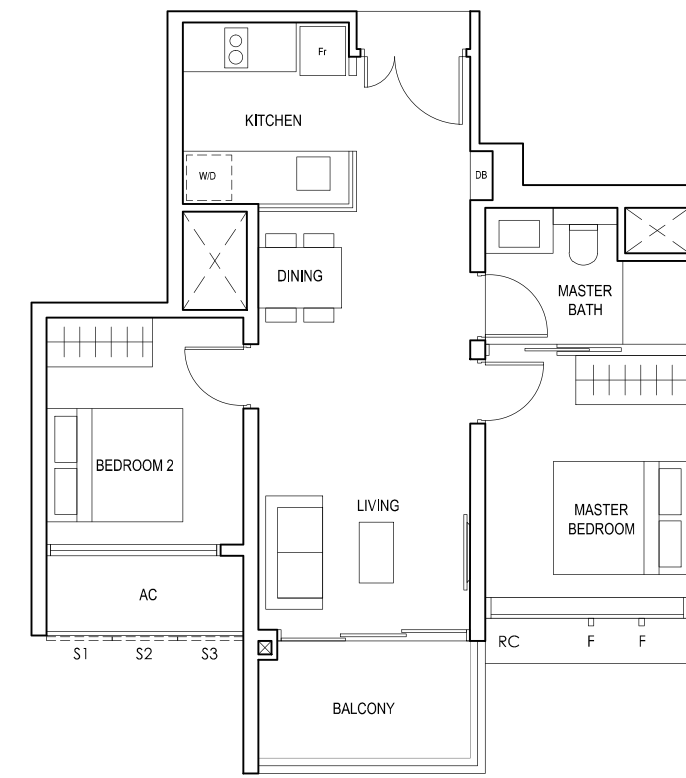


FULL HEIGHT ALUMINIUM PERFORATED SCREEN LOCATED AT LEVELS:
S1 - #06, #07, #09, #10, #11, #13, #14, #15, #17 & #18
S2 - #06, #08, #10, #12, #14, #16 & #18
S3 - #07, #08, #09, #11, #12, #13, #15, #16 & #17

F - FULL HEIGHT ALUMINIUM FIN

TYPE (2)b

#03-28 to #17-28
60 sq m

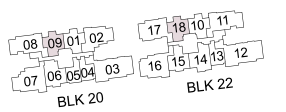
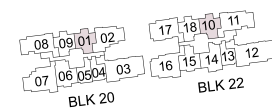


FULL HEIGHT ALUMINIUM PERFORATED SCREEN LOCATED AT LEVELS:
S1 - #03, #05, #06, #07, #09, #10, #11, #13, #14, #15 & #17
S2 - #04, #06, #08, #10, #12, #14 & #16
S3 - #03, #04, #05, #07, #08, #09, #11, #12, #13, #15, #16 & #17

F - FULL HEIGHT ALUMINIUM FIN

LEGEND:
Fr - FRIDGE DB - DISTRIBUTION BOARD W/D - WASHER CUM DRYER
AC - AIRCON LEDGE RC - REINFORCED CONCRETE LEDGE

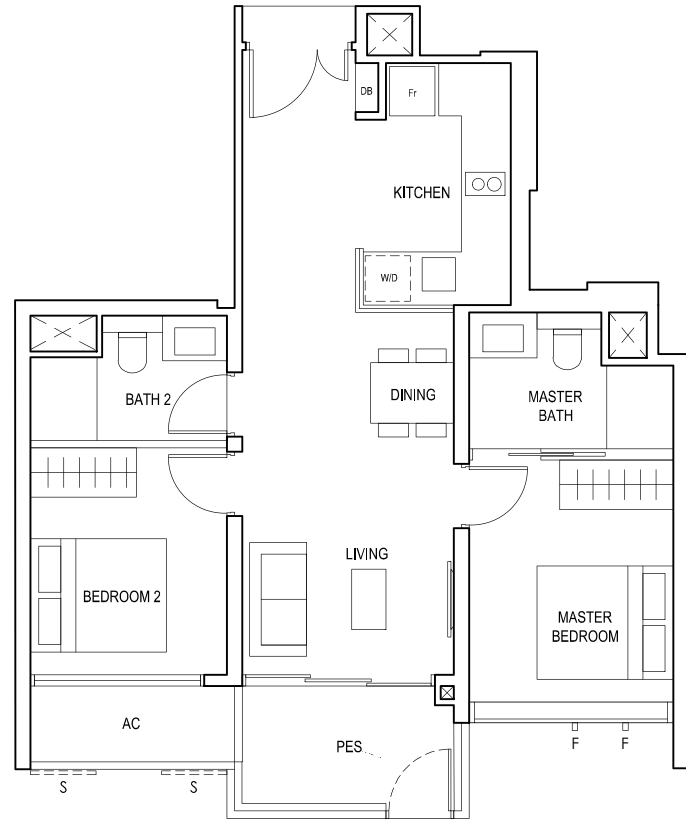
* AREA INCLUDES AIRCON (AC) LEDGE, BALCONY AND PRIVATE ENCLOSED SPACE (PES).
* THE BALCONY/PRIVATE ENCLOSED SPACE (PES) SHALL NOT BE ENCLOSED UNLESS WITH THE APPROVED BALCONY/PES SCREEN. FOR AN ILLUSTRATION OF THE APPROVED BALCONY/PES SCREEN, PLEASE REFER TO THE DIAGRAM ANNEXED HERETO AS "ANNEXURE 1".



2-BEDROOM PREMIUM

TYPE (2P)a1

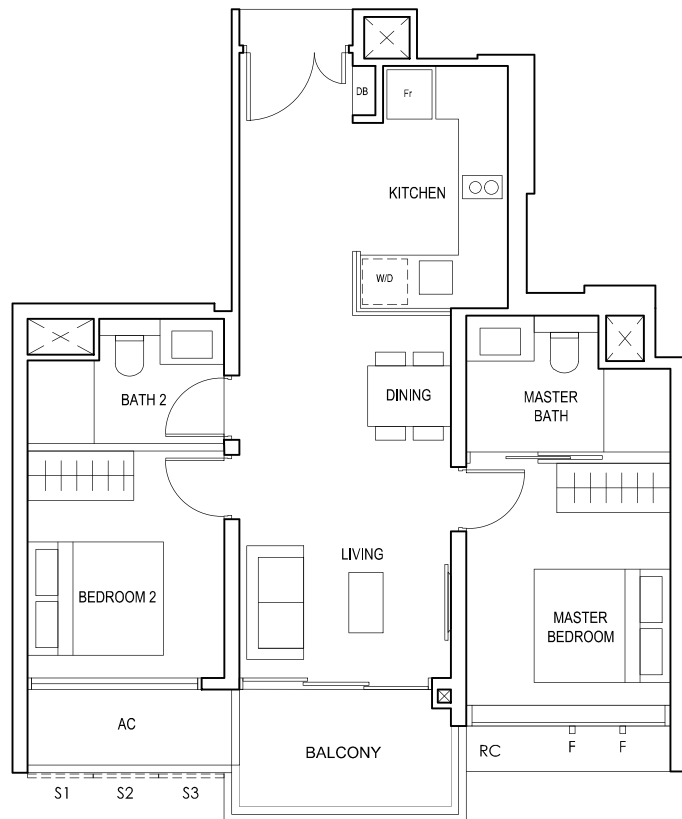
#01-15
65 sq m



S - FULL HEIGHT ALUMINIUM PERFORATED SCREEN
F - FULL HEIGHT ALUMINIUM FIN

TYPE (2P)a

#02-15 to #18-15
65 sq m



FULL HEIGHT ALUMINIUM PERFORATED SCREEN LOCATED AT LEVELS:
S1 - #02, #03, #05, #06, #07, #09, #10, #11, #13, #14, #15, #17 & #18
S2 - #02, #04, #06, #08, #10, #12, #14, #16 & #18
S3 - #03, #04, #05, #07, #08, #09, #11, #12, #13, #15, #16, #17

F - FULL HEIGHT ALUMINIUM FIN

LEGEND:
Fr - FRIDGE DB - DISTRIBUTION BOARD W/D - WASHER CUM DRYER
AC - AIRCON LEDGE PES - PRIVATE ENCLOSED SPACE RC - REINFORCED CONCRETE LEDGE

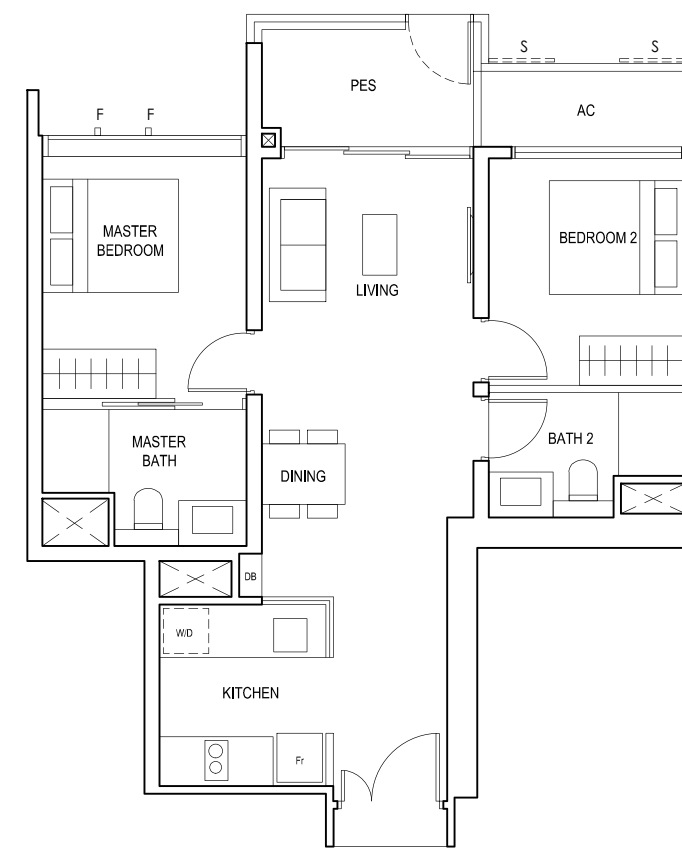
* AREA INCLUDES AIRCON (AC) LEDGE, BALCONY AND PRIVATE ENCLOSED SPACE (PES).
* THE BALCONY/PRIVATE ENCLOSED SPACE (PES) SHALL NOT BE ENCLOSED UNLESS WITH THE APPROVED BALCONY/PES SCREEN. FOR AN ILLUSTRATION OF THE APPROVED BALCONY/PES SCREEN, PLEASE REFER TO THE DIAGRAM ANNEXED HERETO AS "ANNEXURE 1".



2-BEDROOM PREMIUM

TYPE (2P)b1

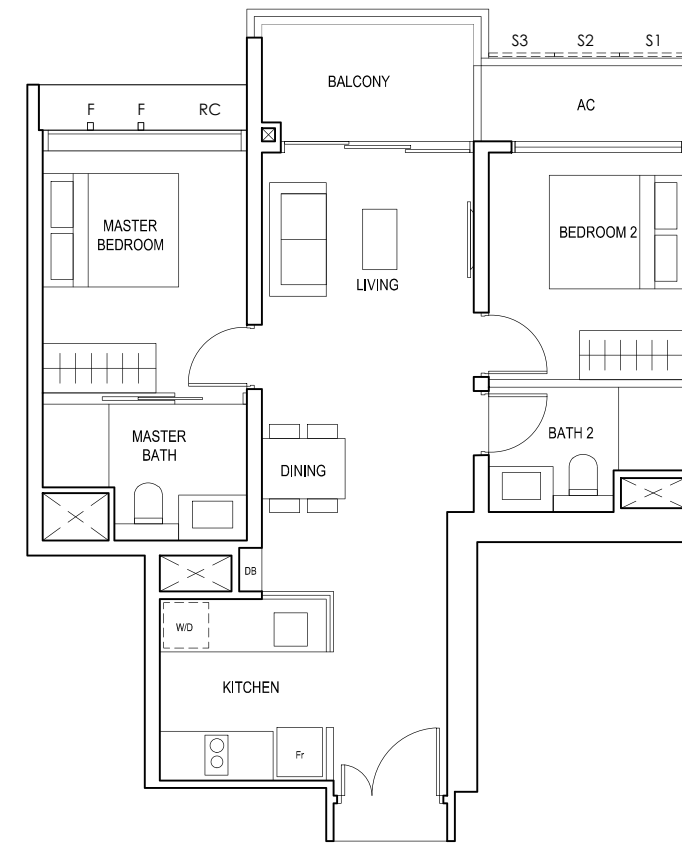
#01-31
66 sq m



S - FULL HEIGHT ALUMINIUM PERFORATED SCREEN
F - FULL HEIGHT ALUMINIUM FIN

TYPE (2P)b

#02-31 to #18-31
66 sq m

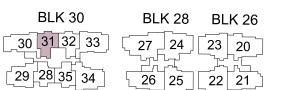
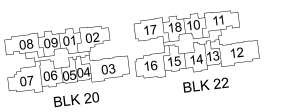
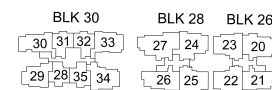
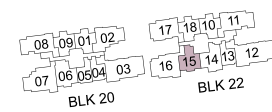
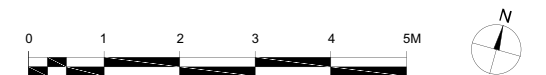


FULL HEIGHT ALUMINIUM PERFORATED SCREEN LOCATED AT LEVELS:
S1 - #02, #03, #05, #06, #07, #09, #10, #11, #13, #14, #15, #17 & #18
S2 - #02, #04, #06, #08, #10, #12, #14, #16 & #18
S3 - #03, #04, #05, #07, #08, #09, #11, #12, #13, #15, #16, #17

F - FULL HEIGHT ALUMINIUM FIN

LEGEND:
Fr - FRIDGE DB - DISTRIBUTION BOARD W/D - WASHER CUM DRYER
AC - AIRCON LEDGE PES - PRIVATE ENCLOSED SPACE RC - REINFORCED CONCRETE LEDGE

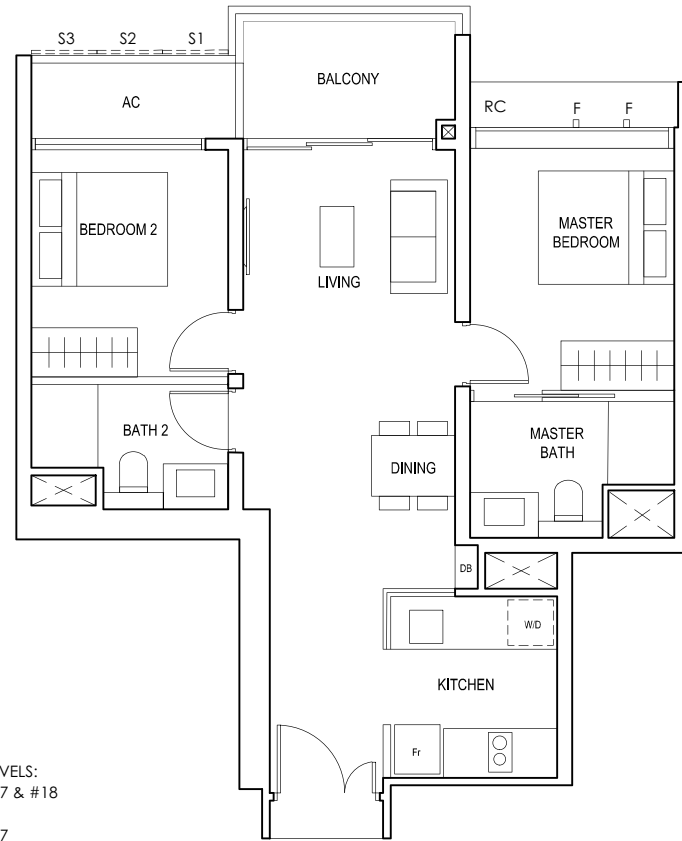
* AREA INCLUDES AIRCON (AC) LEDGE, BALCONY AND PRIVATE ENCLOSED SPACE (PES).
* THE BALCONY/PRIVATE ENCLOSED SPACE (PES) SHALL NOT BE ENCLOSED UNLESS WITH THE APPROVED BALCONY/PES SCREEN. FOR AN ILLUSTRATION OF THE APPROVED BALCONY/PES SCREEN, PLEASE REFER TO THE DIAGRAM ANNEXED HERETO AS "ANNEXURE 1".



2-BEDROOM PREMIUM

TYPE (2P)b

#02-32 to #18-32
66 sq m

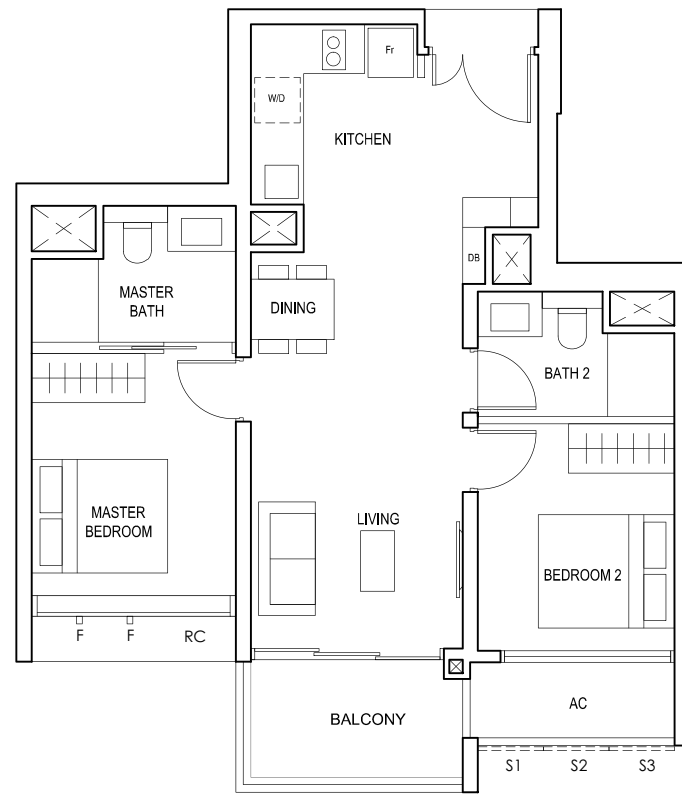


FULL HEIGHT ALUMINIUM PERFORATED SCREEN LOCATED AT LEVELS:
S1 - #02, #03, #05, #06, #07, #09, #10, #11, #13, #14, #15, #17 & #18
S2 - #02, #04, #06, #08, #10, #12, #14, #16 & #18
S3 - #03, #04, #05, #07, #08, #09, #11, #12, #13, #15, #16, #17

F - FULL HEIGHT ALUMINIUM FIN

TYPE (2P)c

#03-35 to #17-35
65 sq m

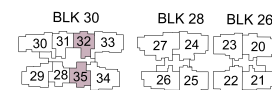
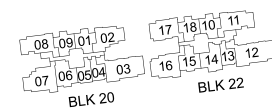


FULL HEIGHT ALUMINIUM PERFORATED SCREEN LOCATED AT LEVELS:
S1 - #03, #05, #06, #07, #09, #10, #11, #13, #14, #15 & #17
S2 - #04, #06, #08, #10, #12, #14 & #16
S3 - #03, #04, #05, #07, #08, #09, #11, #12, #13, #15, #16, #17

F - FULL HEIGHT ALUMINIUM FIN

LEGEND:
Fr - FRIDGE DB - DISTRIBUTION BOARD W/D - WASHER CUM DRYER
AC - AIRCON LEDGE RC - REINFORCED CONCRETE LEDGE

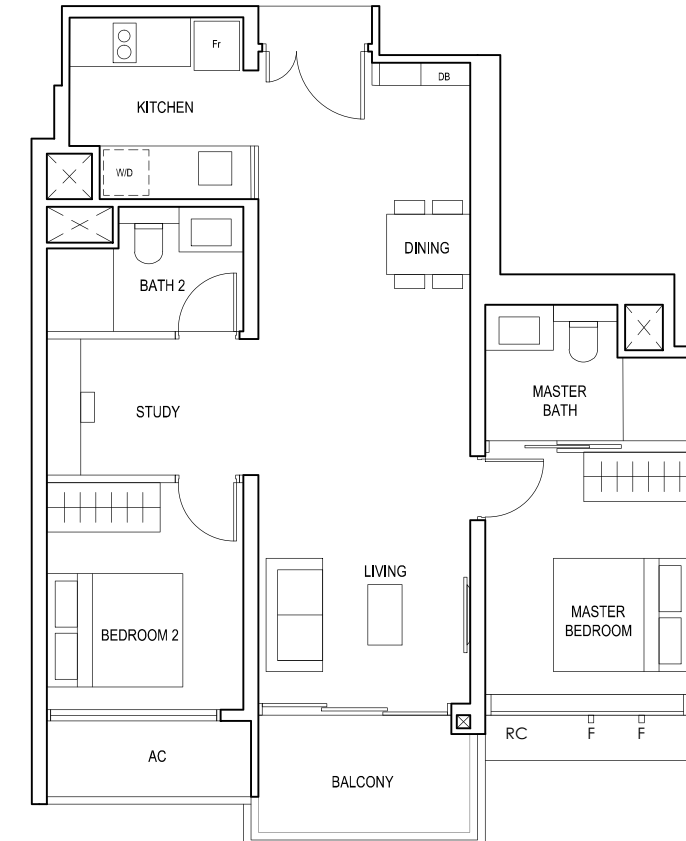
* AREA INCLUDES AIRCON (AC) LEDGE, BALCONY AND PRIVATE ENCLOSED SPACE (PES).
* THE BALCONY/PRIVATE ENCLOSED SPACE (PES) SHALL NOT BE ENCLOSED UNLESS WITH THE APPROVED BALCONY/PES SCREEN. FOR AN ILLUSTRATION OF THE APPROVED BALCONY/PES SCREEN, PLEASE REFER TO THE DIAGRAM ANNEXED HERETO AS "ANNEXURE 1".



2-BEDROOM (with Study)

TYPE (2+1)a

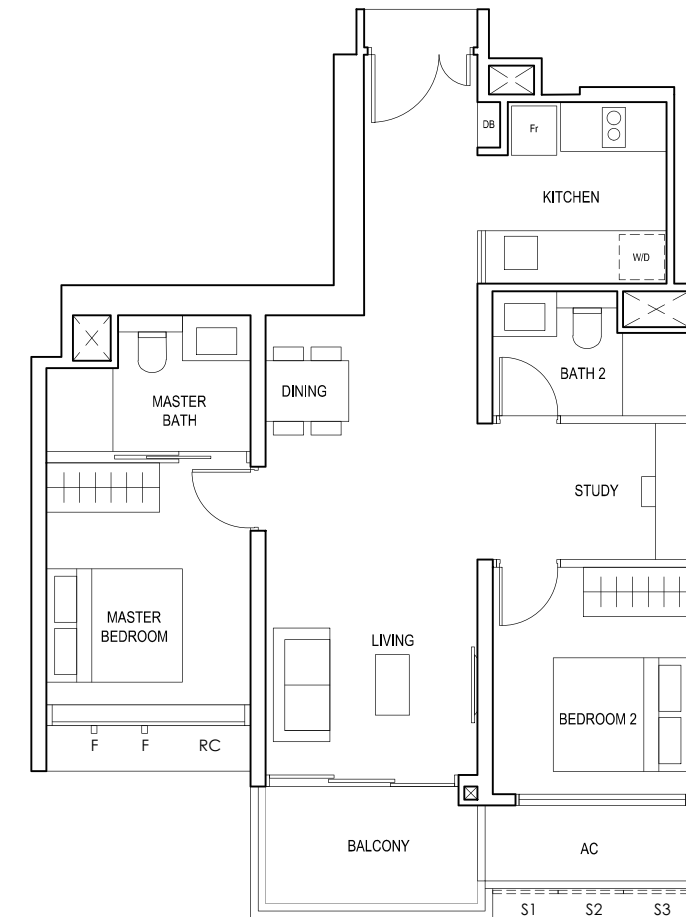
#02-06 to #18-06
75 sq m



F - FULL HEIGHT ALUMINIUM FIN

TYPE (2+1)b

#02-14 to #18-14
74 sq m

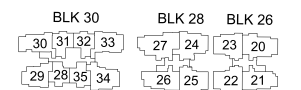
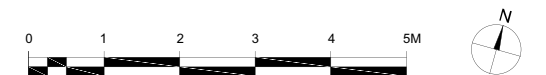


FULL HEIGHT ALUMINIUM PERFORATED SCREEN LOCATED AT LEVELS:
S1 - #02, #03, #05, #06, #07, #09, #10, #11, #13, #14, #15, #17 & #18
S2 - #02, #04, #06, #08, #10, #12, #14, #16 & #18
S3 - #03, #04, #05, #07, #08, #09, #11, #12, #13, #15, #16, #17

F - FULL HEIGHT ALUMINIUM FIN

LEGEND:
Fr - FRIDGE DB - DISTRIBUTION BOARD W/D - WASHER CUM DRYER
AC - AIRCON LEDGE RC - REINFORCED CONCRETE LEDGE

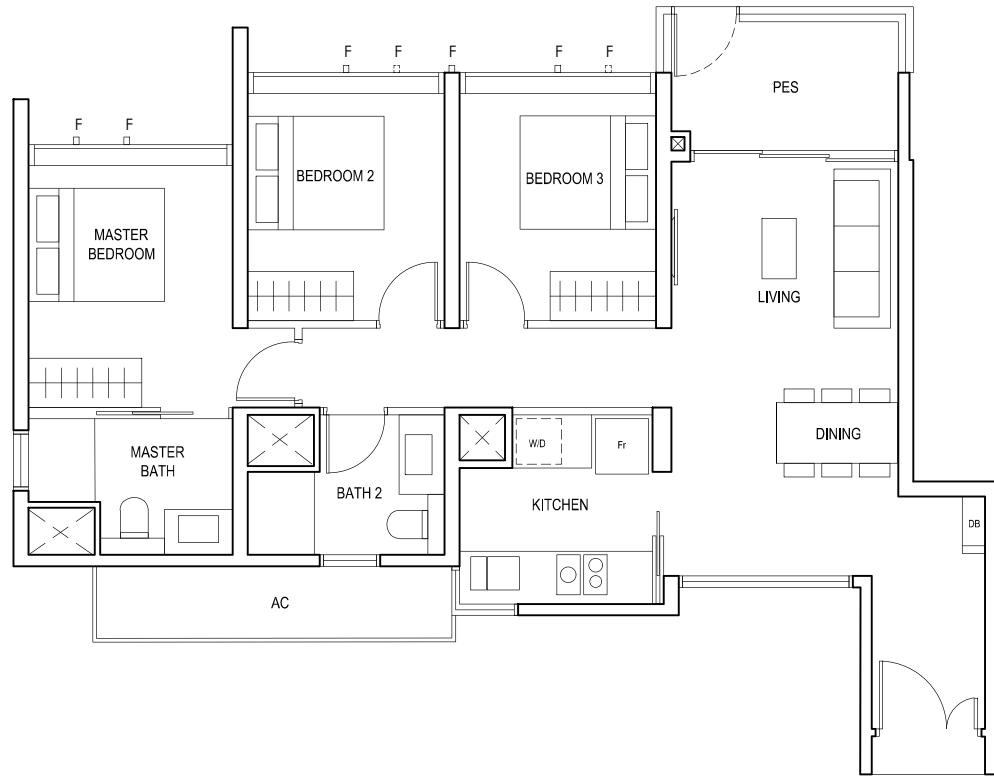
* AREA INCLUDES AIRCON (AC) LEDGE, BALCONY AND PRIVATE ENCLOSED SPACE (PES).
* THE BALCONY/PRIVATE ENCLOSED SPACE (PES) SHALL NOT BE ENCLOSED UNLESS WITH THE APPROVED BALCONY/PES SCREEN. FOR AN ILLUSTRATION OF THE APPROVED BALCONY/PES SCREEN, PLEASE REFER TO THE DIAGRAM ANNEXED HERETO AS "ANNEXURE 1".



3-BEDROOM

TYPE (3)a1

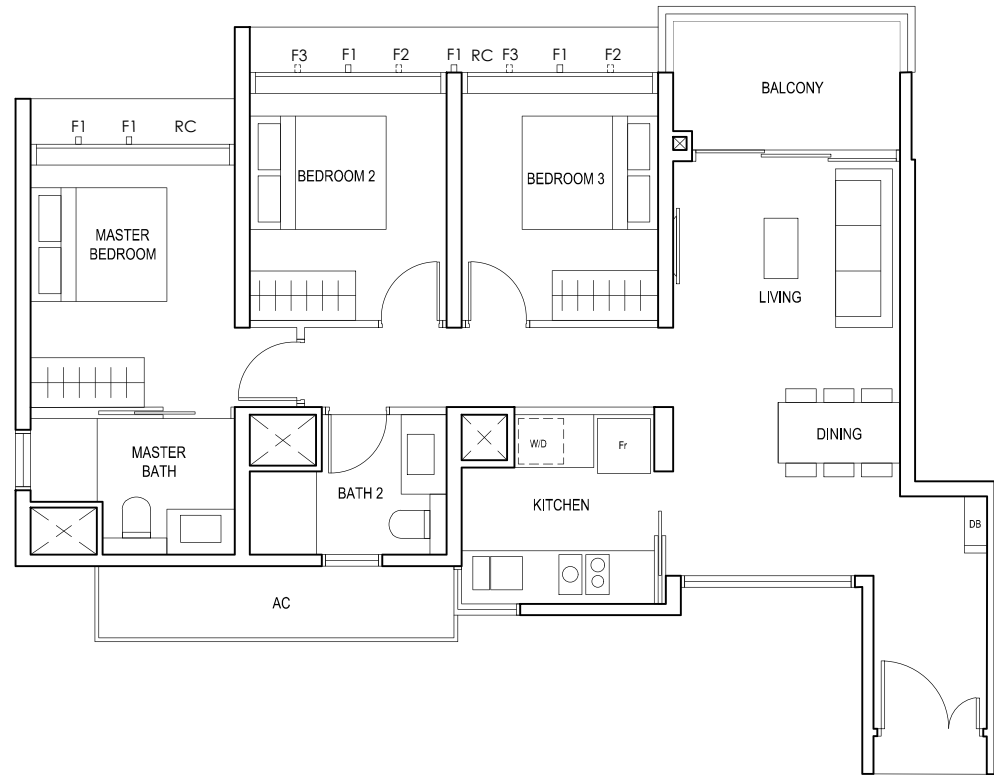
#05-17
87 sq m



F - FULL HEIGHT ALUMINIUM FIN

TYPE (3)a

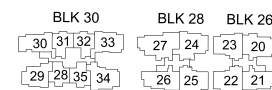
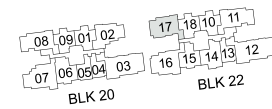
#06-17 to #18-17
87 sq m



FULL HEIGHT ALUMINIUM FIN LOCATED AT LEVELS:
F1 - #06 to #18
F2 - #06, #09, #10, #13, #14, #17 & #18
F3 - #07, #08, #11, #12, #15 & #16

LEGEND:
Fr - FRIDGE DB - DISTRIBUTION BOARD W/D - WASHER CUM DRYER
AC - AIRCON LEDGE PES - PRIVATE ENCLOSED SPACE RC - REINFORCED CONCRETE LEDGE

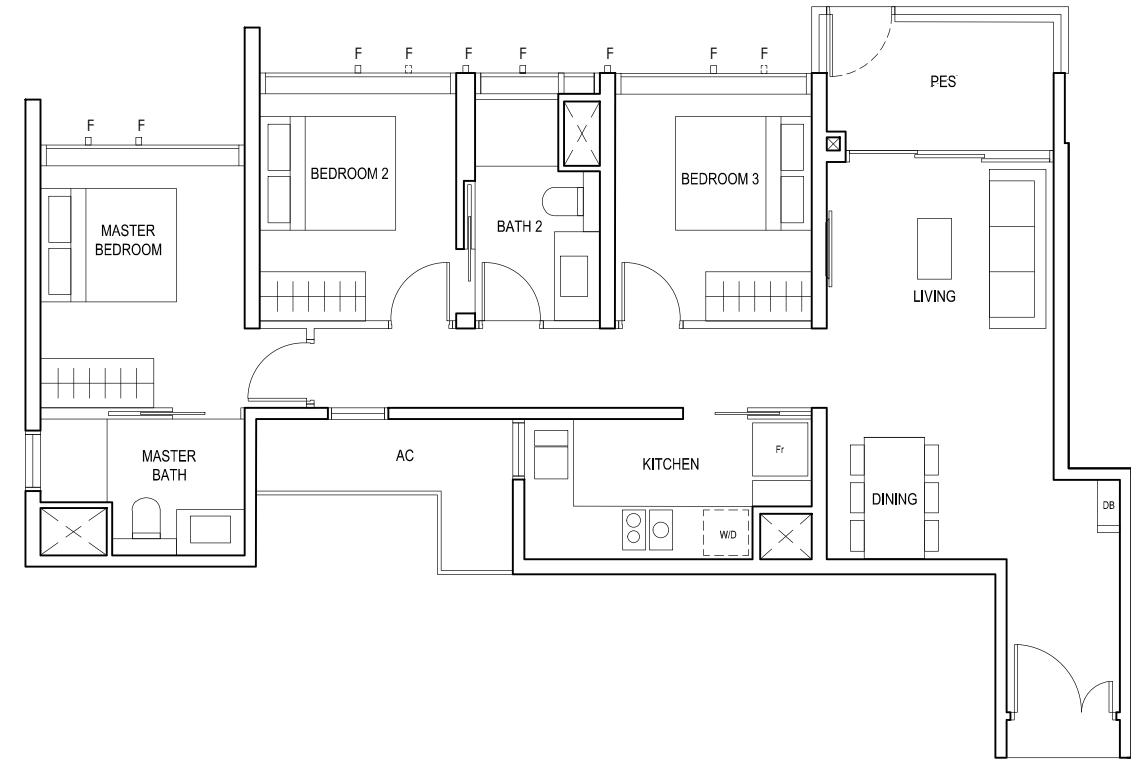
* AREA INCLUDES AIRCON (AC) LEDGE, BALCONY AND PRIVATE ENCLOSED SPACE (PES).
* THE BALCONY/PRIVATE ENCLOSED SPACE (PES) SHALL NOT BE ENCLOSED UNLESS WITH THE APPROVED BALCONY/PES SCREEN. FOR AN ILLUSTRATION OF THE APPROVED BALCONY/PES SCREEN, PLEASE REFER TO THE DIAGRAM ANNEXED HERETO AS "ANNEXURE 1".



3-BEDROOM

TYPE (3)b1

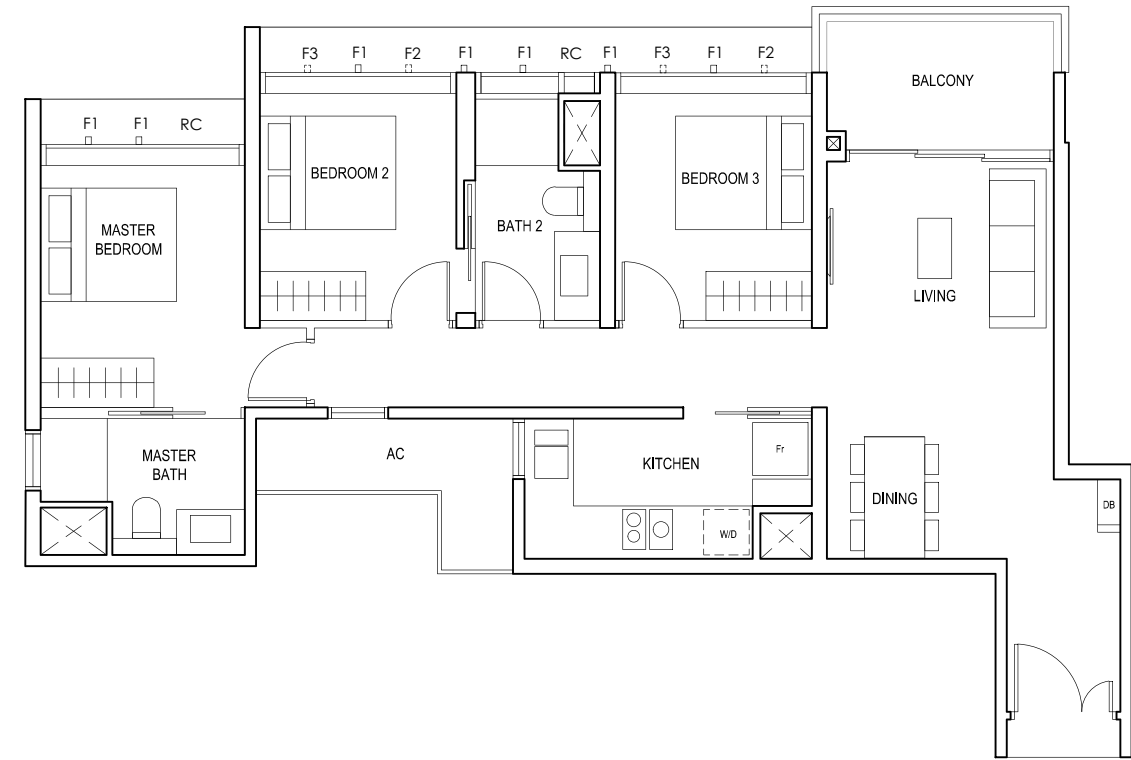
#05-08
89 sq m



F - FULL HEIGHT ALUMINIUM FIN

TYPE (3)b

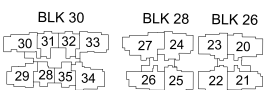
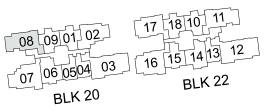
#06-08 to #18-08
89 sq m



FULL HEIGHT ALUMINIUM FIN LOCATED AT LEVELS:
F1 - #06 to #18
F2 - #06, #09, #10, #13, #14, #17 & #18
F3 - #07, #08, #11, #12, #15 & #16

LEGEND:
Fr - FRIDGE DB - DISTRIBUTION BOARD W/D - WASHER CUM DRYER
AC - AIRCON LEDGE PES - PRIVATE ENCLOSED SPACE RC - REINFORCED CONCRETE LEDGE

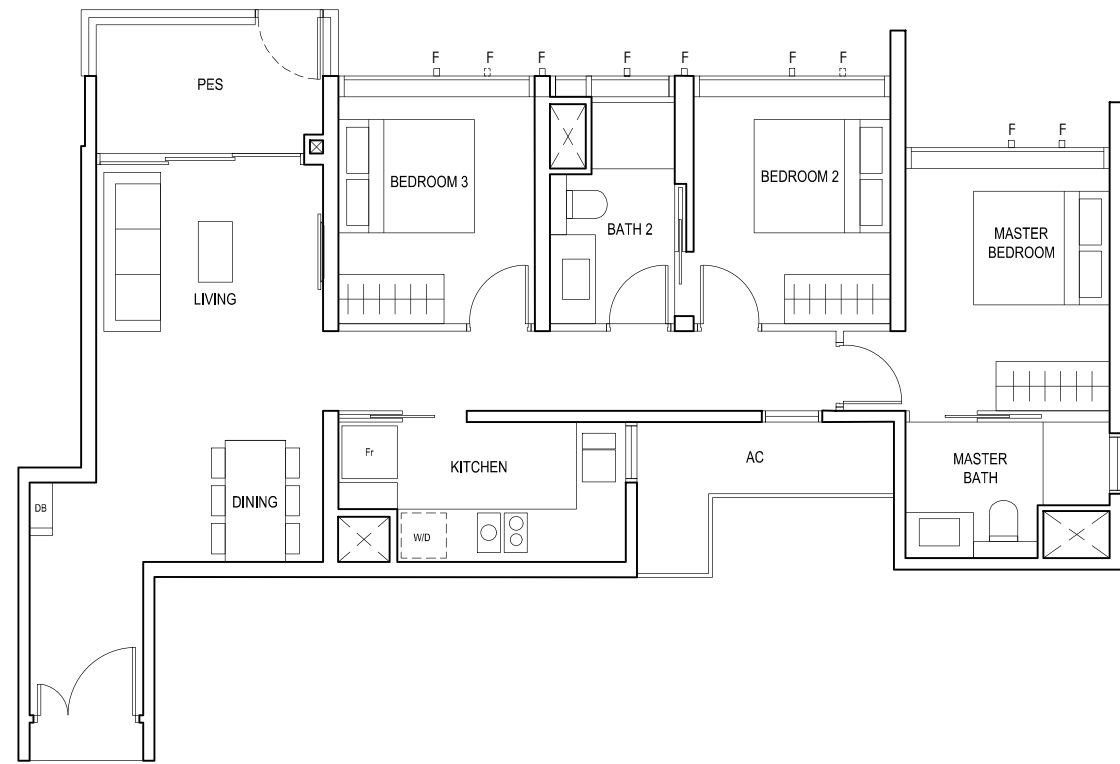
* AREA INCLUDES AIRCON (AC) LEDGE, BALCONY AND PRIVATE ENCLOSED SPACE (PES).
* THE BALCONY/PRIVATE ENCLOSED SPACE (PES) SHALL NOT BE ENCLOSED UNLESS WITH THE APPROVED BALCONY/PES SCREEN. FOR AN ILLUSTRATION OF THE APPROVED BALCONY/PES SCREEN, PLEASE REFER TO THE DIAGRAM ANNEXED HERETO AS "ANNEXURE 1".



3-BEDROOM

TYPE (3)b1

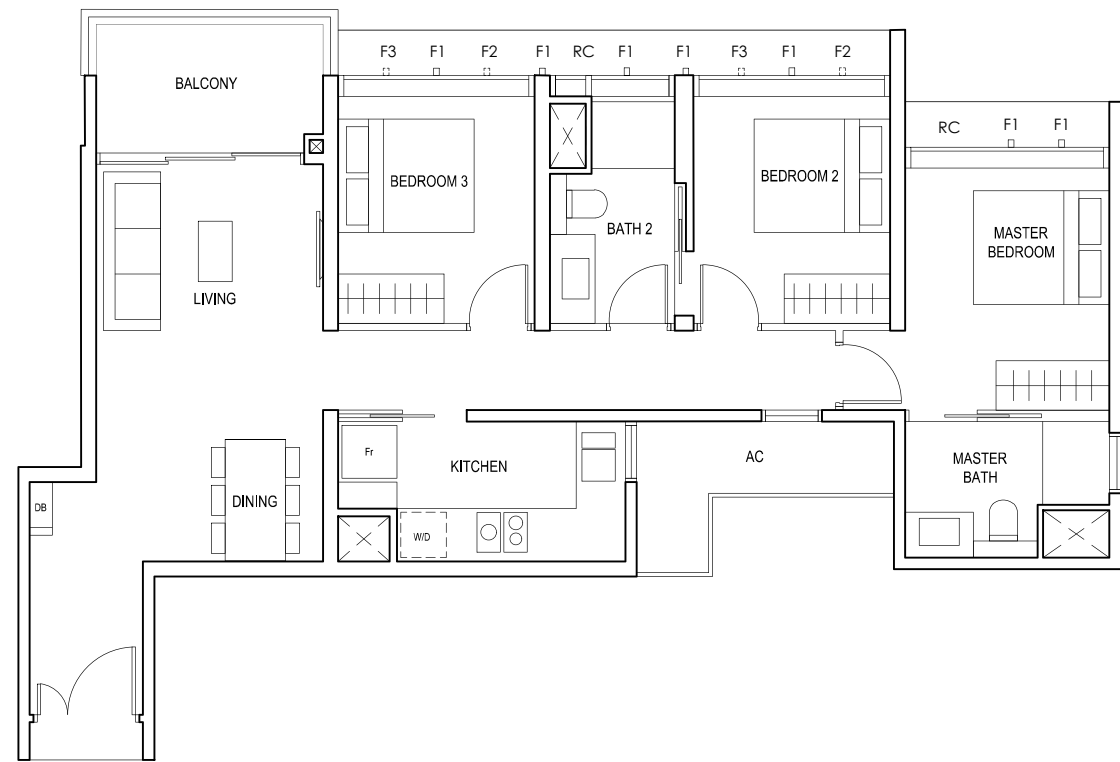
#05-11
89 sq m



F - FULL HEIGHT ALUMINIUM FIN

TYPE (3)b

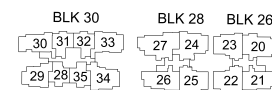
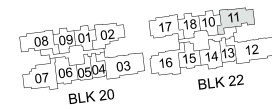
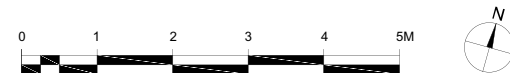
#06-11 to #18-11
89 sq m



FULL HEIGHT ALUMINIUM FIN LOCATED AT LEVELS:
F1 - #06 to #18
F2 - #06, #09, #10, #13, #14, #17 & #18
F3 - #07, #08, #11, #12, #15 & #16

LEGEND:
Fr - FRIDGE DB - DISTRIBUTION BOARD W/D - WASHER CUM DRYER
AC - AIRCON LEDGE PES - PRIVATE ENCLOSED SPACE RC - REINFORCED CONCRETE LEDGE

* AREA INCLUDES AIRCON (AC) LEDGE, BALCONY AND PRIVATE ENCLOSED SPACE (PES).
* THE BALCONY/PRIVATE ENCLOSED SPACE (PES) SHALL NOT BE ENCLOSED UNLESS WITH THE APPROVED BALCONY/PES SCREEN. FOR AN ILLUSTRATION OF THE APPROVED BALCONY/PES SCREEN, PLEASE REFER TO THE DIAGRAM ANNEXED HERETO AS "ANNEXURE 1".



3-BEDROOM

TYPE (3)c

#03-30 to #18-30
91 sq m



FULL HEIGHT ALUMINIUM FIN LOCATED AT LEVELS:
F1 - #03 to #18
F2 - #05, #06, #09, #10, #13, #14, #17 & #18
F3 - #03, #04, #07, #08, #11, #12, #15 & #16

TYPE (3)e

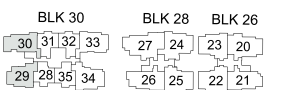
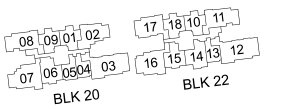
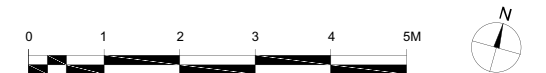
#03-29 to #17-29
87 sq m



FULL HEIGHT ALUMINIUM FIN LOCATED AT LEVELS:
F1 - #03 to #17
F2 - #05, #06, #09, #10, #13, #14 & #17
F3 - #03, #04, #07, #08, #11, #12, #15 & #16

LEGEND:
Fr - FRIDGE DB - DISTRIBUTION BOARD W/D - WASHER CUM DRYER
AC - AIRCON LEDGE RC - REINFORCED CONCRETE LEDGE

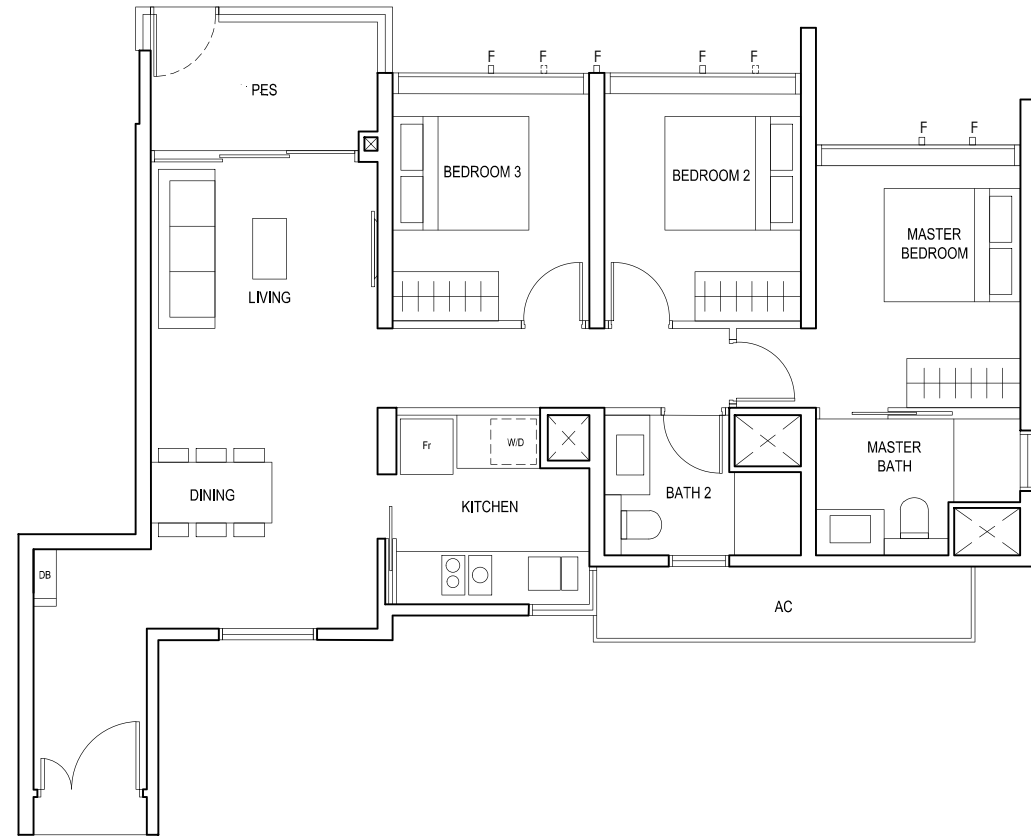
* AREA INCLUDES AIRCON (AC) LEDGE, BALCONY AND PRIVATE ENCLOSED SPACE (PES).
* THE BALCONY/PRIVATE ENCLOSED SPACE (PES) SHALL NOT BE ENCLOSED UNLESS WITH THE APPROVED BALCONY/PES SCREEN. FOR AN ILLUSTRATION OF THE APPROVED BALCONY/PES SCREEN, PLEASE REFER TO THE DIAGRAM ANNEXED HERETO AS "ANNEXURE 1".



3-BEDROOM

TYPE (3)d1

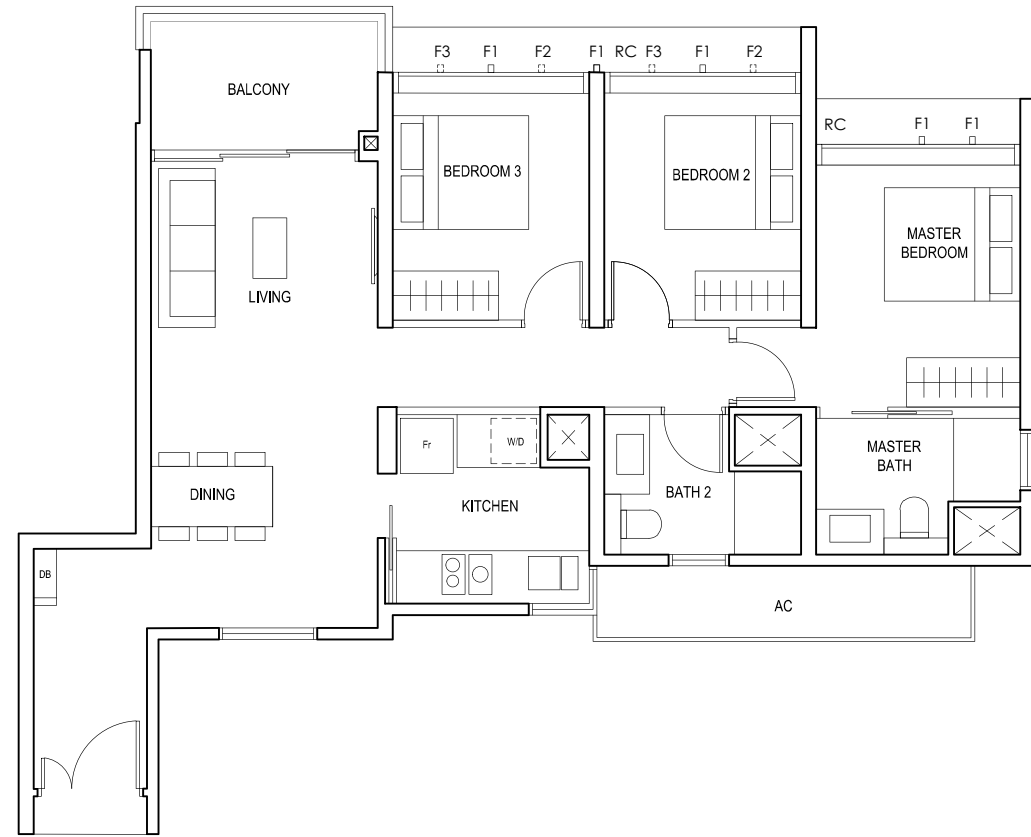
#01-33
90 sq m



F - FULL HEIGHT ALUMINIUM FIN

TYPE (3)d

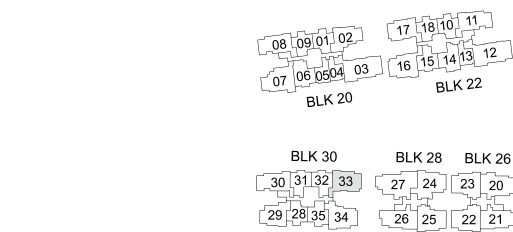
#02-33 to #18-33
90 sq m



FULL HEIGHT ALUMINIUM FIN LOCATED AT LEVELS:
F1 - #02 to #18
F2 - #02, #05, #06, #09, #10, #13, #14, #17 & #18
F3 - #03, #04, #07, #08, #11, #12, #15 & #16

LEGEND:
Fr - FRIDGE DB - DISTRIBUTION BOARD W/D - WASHER CUM DRYER
AC - AIRCON LEDGE PES - PRIVATE ENCLOSED SPACE RC - REINFORCED CONCRETE LEDGE

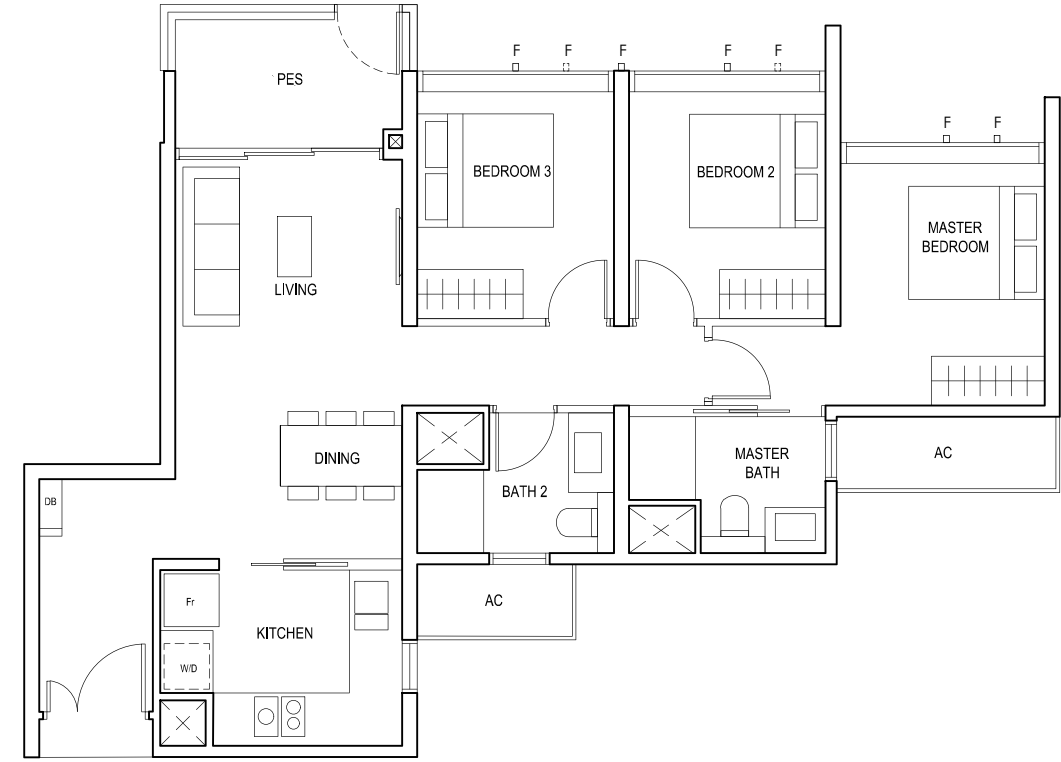
* AREA INCLUDES AIRCON (AC) LEDGE, BALCONY AND PRIVATE ENCLOSED SPACE (PES).
* THE BALCONY/PRIVATE ENCLOSED SPACE (PES) SHALL NOT BE ENCLOSED UNLESS WITH THE APPROVED BALCONY/PES SCREEN. FOR AN ILLUSTRATION OF THE APPROVED BALCONY/PES SCREEN, PLEASE REFER TO THE DIAGRAM ANNEXED HERETO AS "ANNEXURE 1".



3-BEDROOM

TYPE (3)f1

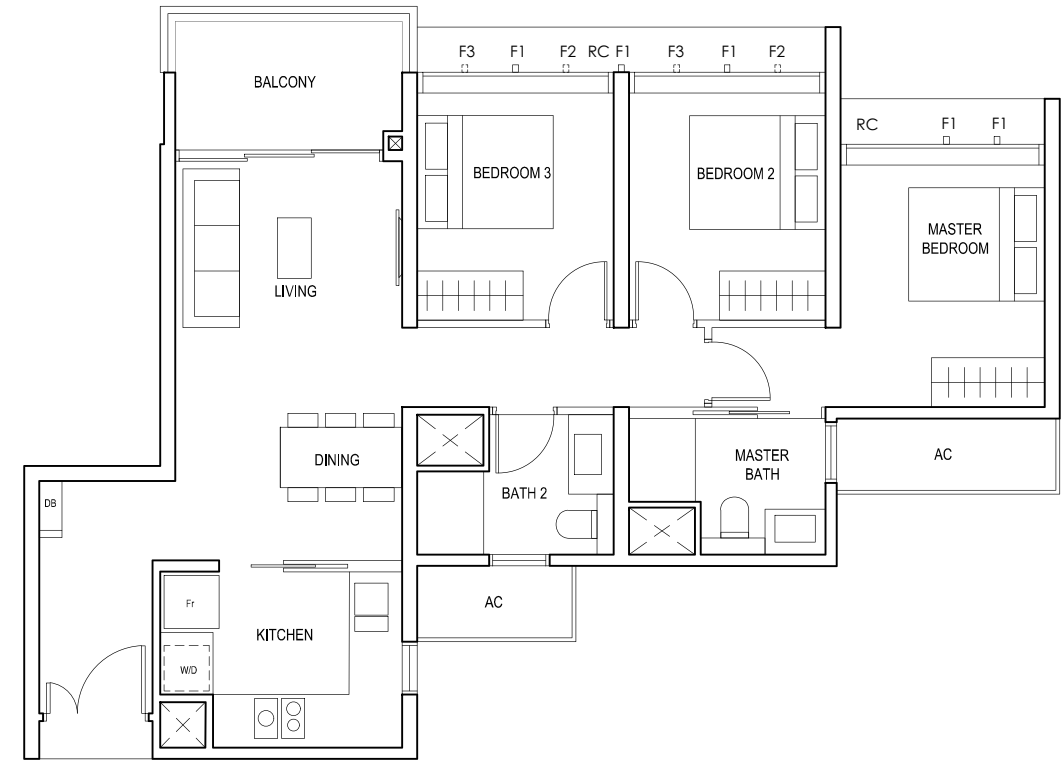
#05-02
88 sq m



F - FULL HEIGHT ALUMINIUM FIN

TYPE (3)f

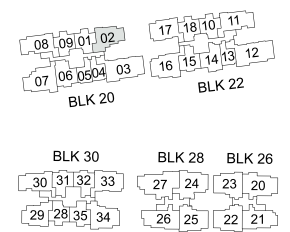
#06-02 to #18-02
88 sq m



FULL HEIGHT ALUMINIUM FIN LOCATED AT LEVELS:
F1 - #06 to #18
F2 - #06, #09, #10, #13, #14, #17 & #18
F3 - #07, #08, #11, #12, #15 & #16

LEGEND:
Fr - FRIDGE DB - DISTRIBUTION BOARD W/D - WASHER CUM DRYER
AC - AIRCON LEDGE PES - PRIVATE ENCLOSED SPACE RC - REINFORCED CONCRETE LEDGE

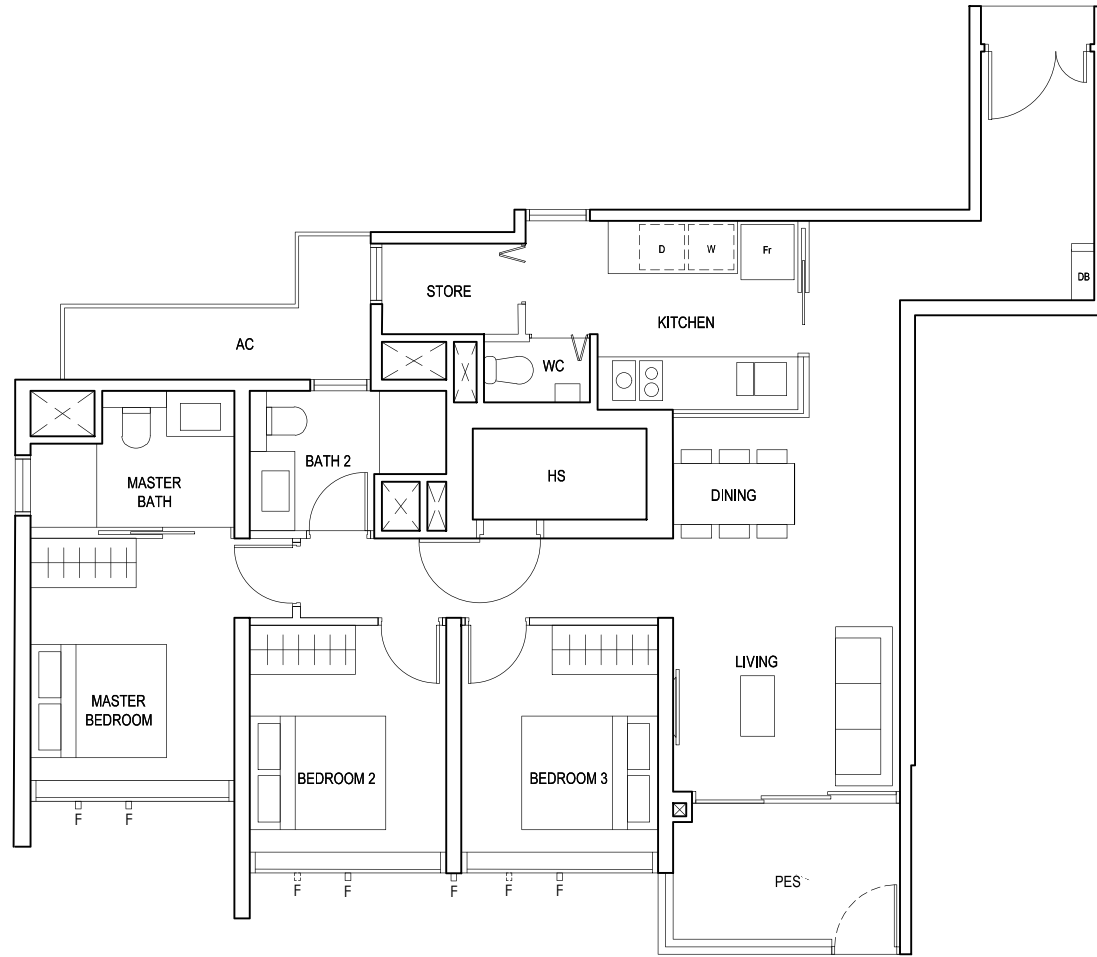
* AREA INCLUDES AIRCON (AC) LEDGE, BALCONY AND PRIVATE ENCLOSED SPACE (PES).
* THE BALCONY/PRIVATE ENCLOSED SPACE (PES) SHALL NOT BE ENCLOSED UNLESS WITH THE APPROVED BALCONY/PES SCREEN. FOR AN ILLUSTRATION OF THE APPROVED BALCONY/PES SCREEN, PLEASE REFER TO THE DIAGRAM ANNEXED HERETO AS "ANNEXURE 1".



3-BEDROOM PREMIUM

TYPE (3Y)a1

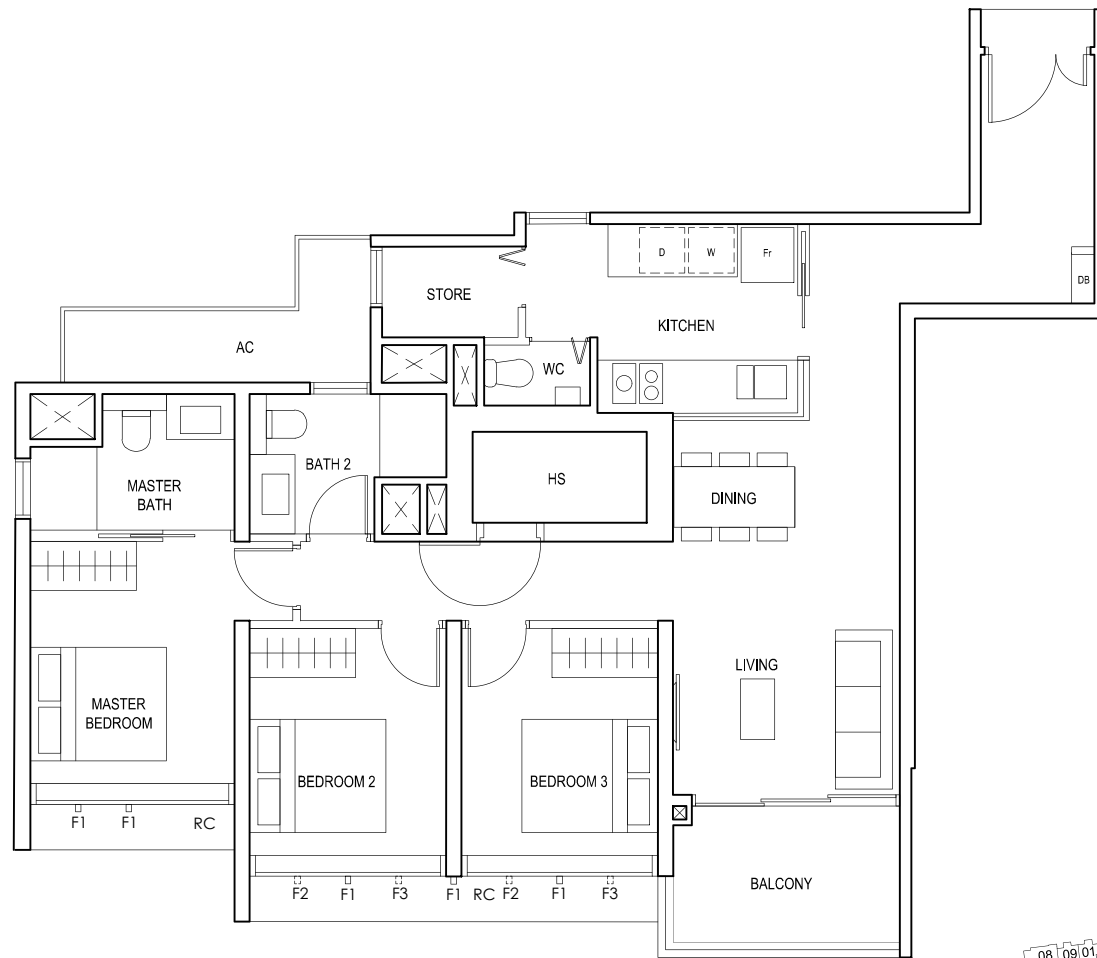
#01-16
102 sq m



F - FULL HEIGHT ALUMINIUM FIN

TYPE (3Y)a

#02-16 to #18-16
102 sq m



FULL HEIGHT ALUMINIUM FIN LOCATED AT LEVELS:
F1 - #02 to #18
F2 - #02, #05, #06, #09, #10, #13, #14, #17 & #18
F3 - #03, #04, #07, #08, #11, #12, #15 & #16

LEGEND:
Fr - FRIDGE DB - DISTRIBUTION BOARD WC - WATER CLOSET W - WASHER D - DRYER
AC - AIRCON LEDGE PES - PRIVATE ENCLOSED SPACE RC - REINFORCED CONCRETE LEDGE HS - HOUSEHOLD SHELTER

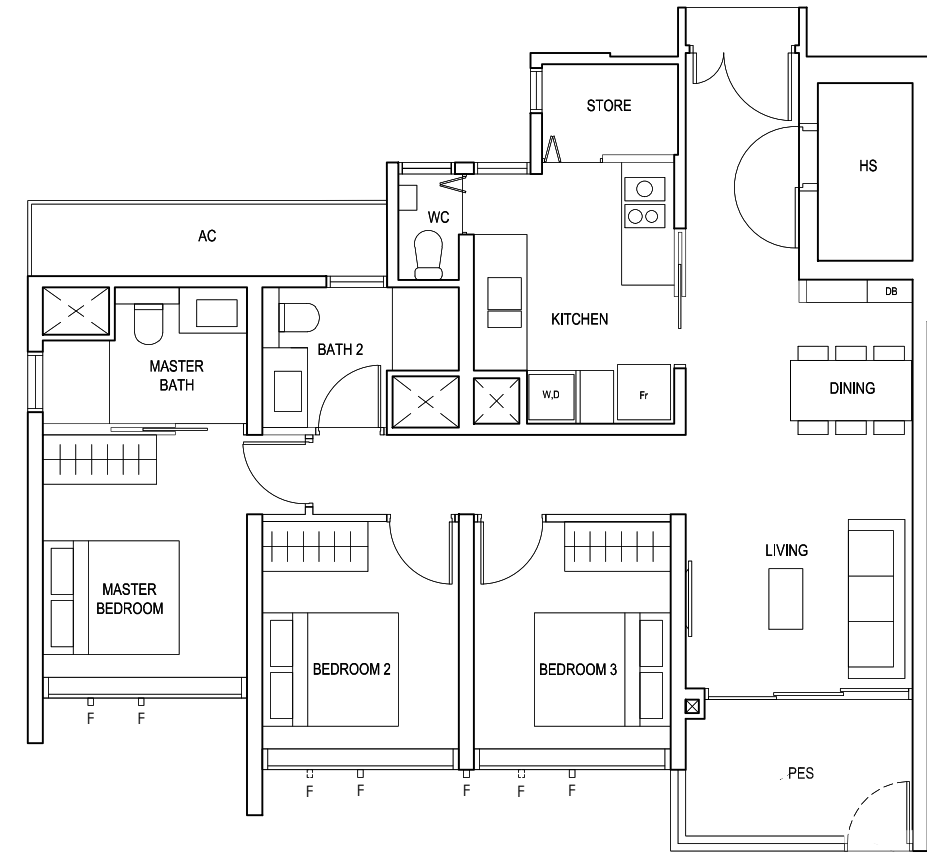
* AREA INCLUDES AIRCON (AC) LEDGE, BALCONY AND PRIVATE ENCLOSED SPACE (PES).
* THE BALCONY/PRIVATE ENCLOSED SPACE (PES) SHALL NOT BE ENCLOSED UNLESS WITH THE APPROVED BALCONY/PES SCREEN. FOR AN ILLUSTRATION OF THE APPROVED BALCONY/PES SCREEN, PLEASE REFER TO THE DIAGRAM ANNEXED HERETO AS "ANNEXURE 1".



3-BEDROOM PREMIUM

TYPE (3Y)b1

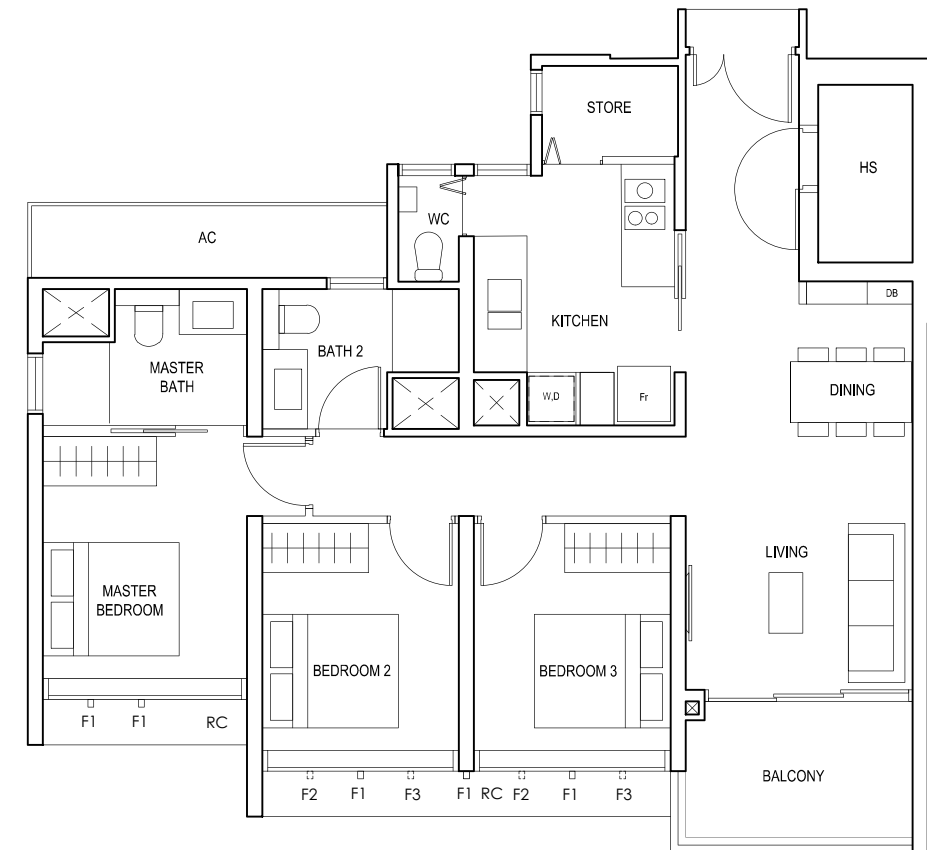
#01-22
98 sq m



F - FULL HEIGHT ALUMINIUM FIN

TYPE (3Y)b

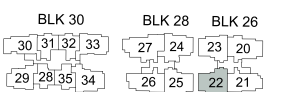
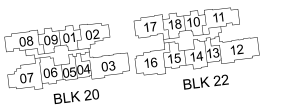
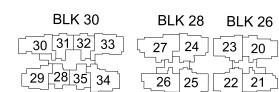
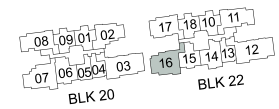
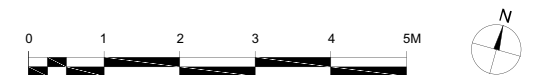
#02-22 to #18-22
98 sq m



FULL HEIGHT ALUMINIUM FIN LOCATED AT LEVELS:
F1 - #02 to #18
F2 - #02, #05, #06, #09, #10, #13, #14, #17 & #18
F3 - #03, #04, #07, #08, #11, #12, #15 & #16

LEGEND:
Fr - FRIDGE DB - DISTRIBUTION BOARD WC - WATER CLOSET W - WASHER D - DRYER
AC - AIRCON LEDGE PES - PRIVATE ENCLOSED SPACE RC - REINFORCED CONCRETE LEDGE HS - HOUSEHOLD SHELTER

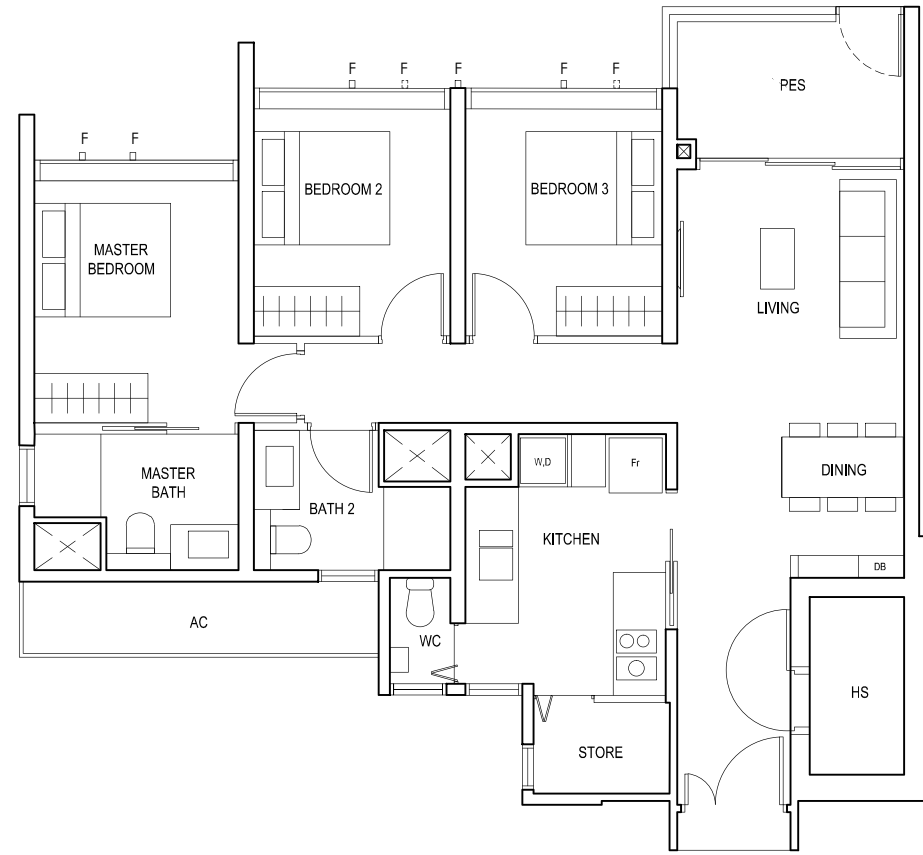
* AREA INCLUDES AIRCON (AC) LEDGE, BALCONY AND PRIVATE ENCLOSED SPACE (PES).
* THE BALCONY/PRIVATE ENCLOSED SPACE (PES) SHALL NOT BE ENCLOSED UNLESS WITH THE APPROVED BALCONY/PES SCREEN. FOR AN ILLUSTRATION OF THE APPROVED BALCONY/PES SCREEN, PLEASE REFER TO THE DIAGRAM ANNEXED HERETO AS "ANNEXURE 1".



3-BEDROOM PREMIUM

TYPE (3Y)b1

#01-23
98 sq m

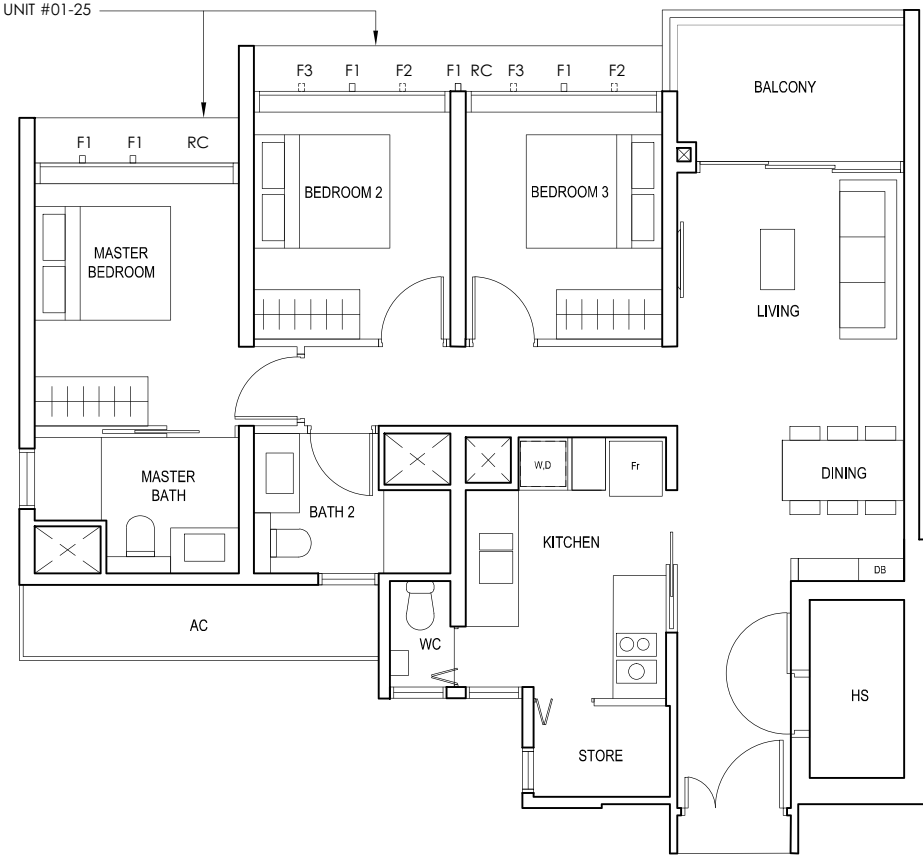


F - FULL HEIGHT ALUMINIUM FIN

TYPE (3Y)b

#02-23 to #18-23
#01-25 to #18-25
98 sq m

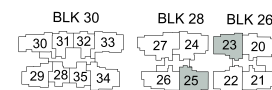
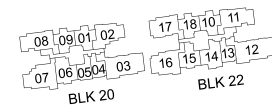
NOT APPLICABLE TO UNIT #01-25



FULL HEIGHT ALUMINIUM FIN LOCATED AT LEVELS:
F1 - #01 to #18
F2 - #01, #02, #05, #06, #09, #10, #13, #14, #17 & #18
F3 - #03, #04, #07, #08, #11, #12, #15 & #16

LEGEND:
Fr - FRIDGE DB - DISTRIBUTION BOARD WC - WATER CLOSET W - WASHER D - DRYER
AC - AIRCON LEDGE PES - PRIVATE ENCLOSED SPACE RC - REINFORCED CONCRETE LEDGE HS - HOUSEHOLD SHELTER

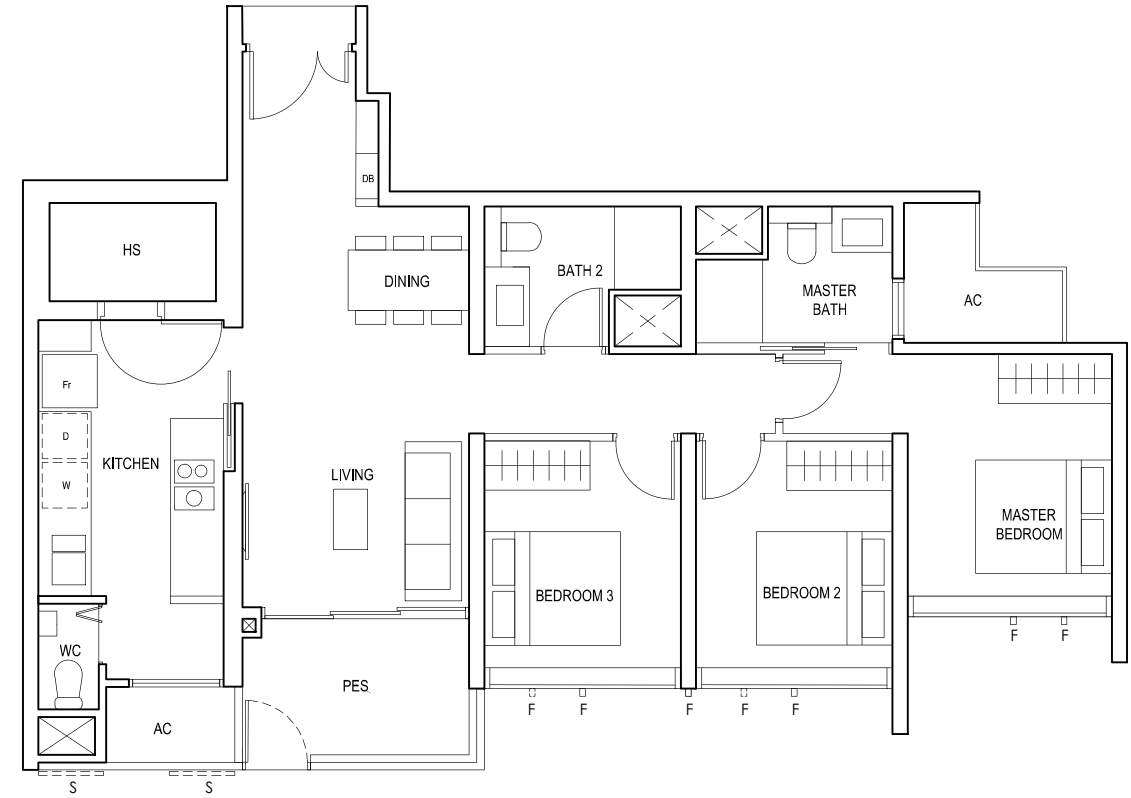
* AREA INCLUDES AIRCON (AC) LEDGE, BALCONY AND PRIVATE ENCLOSED SPACE (PES).
* THE BALCONY/PRIVATE ENCLOSED SPACE (PES) SHALL NOT BE ENCLOSED UNLESS WITH THE APPROVED BALCONY/PES SCREEN. FOR AN ILLUSTRATION OF THE APPROVED BALCONY/PES SCREEN, PLEASE REFER TO THE DIAGRAM ANNEXED HERETO AS "ANNEXURE 1".



3-BEDROOM PREMIUM

TYPE (3Y)c1

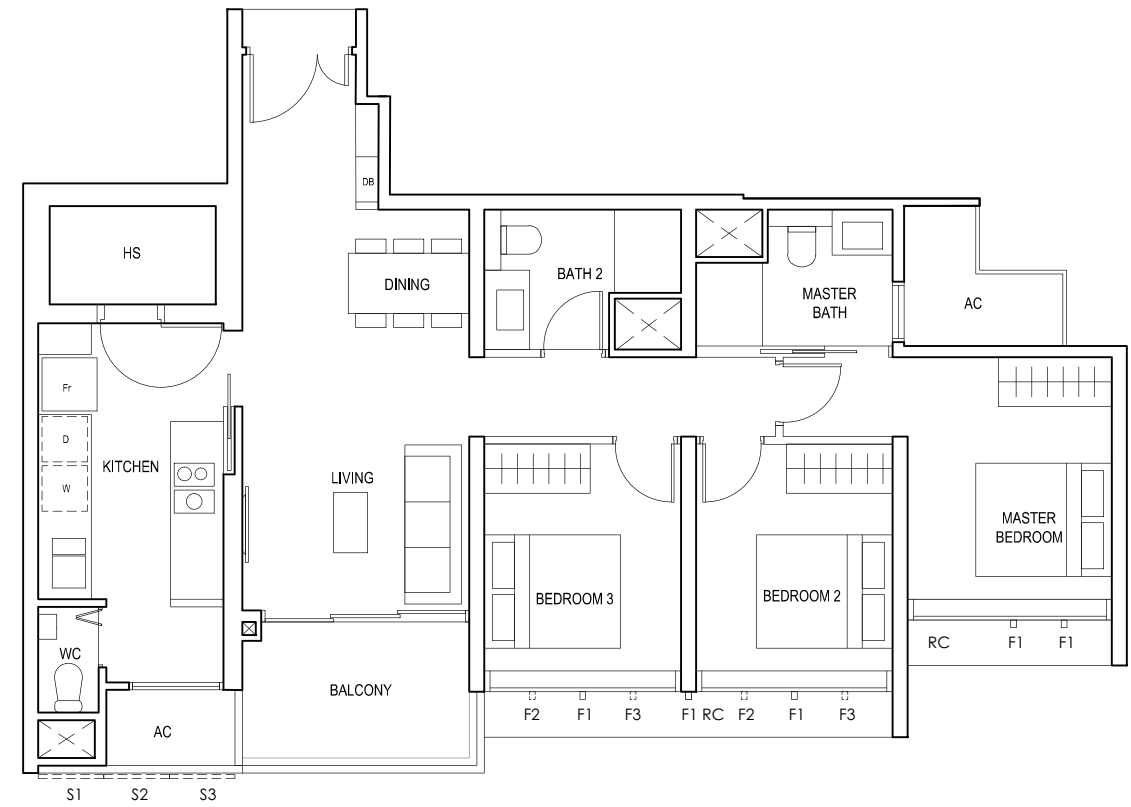
#01-21
97 sq m



S - FULL HEIGHT ALUMINIUM PERFORATED SCREEN
F - FULL HEIGHT ALUMINIUM FIN

TYPE (3Y)c

#02-21 to #18-21
97 sq m

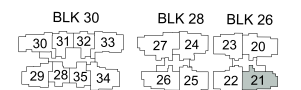
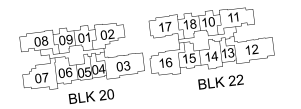
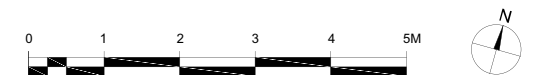


FULL HEIGHT ALUMINIUM PERFORATED SCREEN LOCATED AT LEVELS:
S1 - #02, #03, #05, #06, #07, #09, #10, #11, #13, #14, #15, #17 & #18
S2 - #02, #04, #06, #08, #10, #12, #14, #16 & #18
S3 - #03, #04, #05, #07, #08, #09, #11, #12, #13, #15, #16, #17

FULL HEIGHT ALUMINIUM FIN LOCATED AT LEVELS:
F1 - #02 to #18
F2 - #02, #05, #06, #09, #10, #13, #14, #17 & #18
F3 - #03, #04, #07, #08, #11, #12, #15 & #16

LEGEND:
Fr - FRIDGE DB - DISTRIBUTION BOARD WC - WATER CLOSET W - WASHER D - DRYER
AC - AIRCON LEDGE PES - PRIVATE ENCLOSED SPACE RC - REINFORCED CONCRETE LEDGE HS - HOUSEHOLD SHELTER

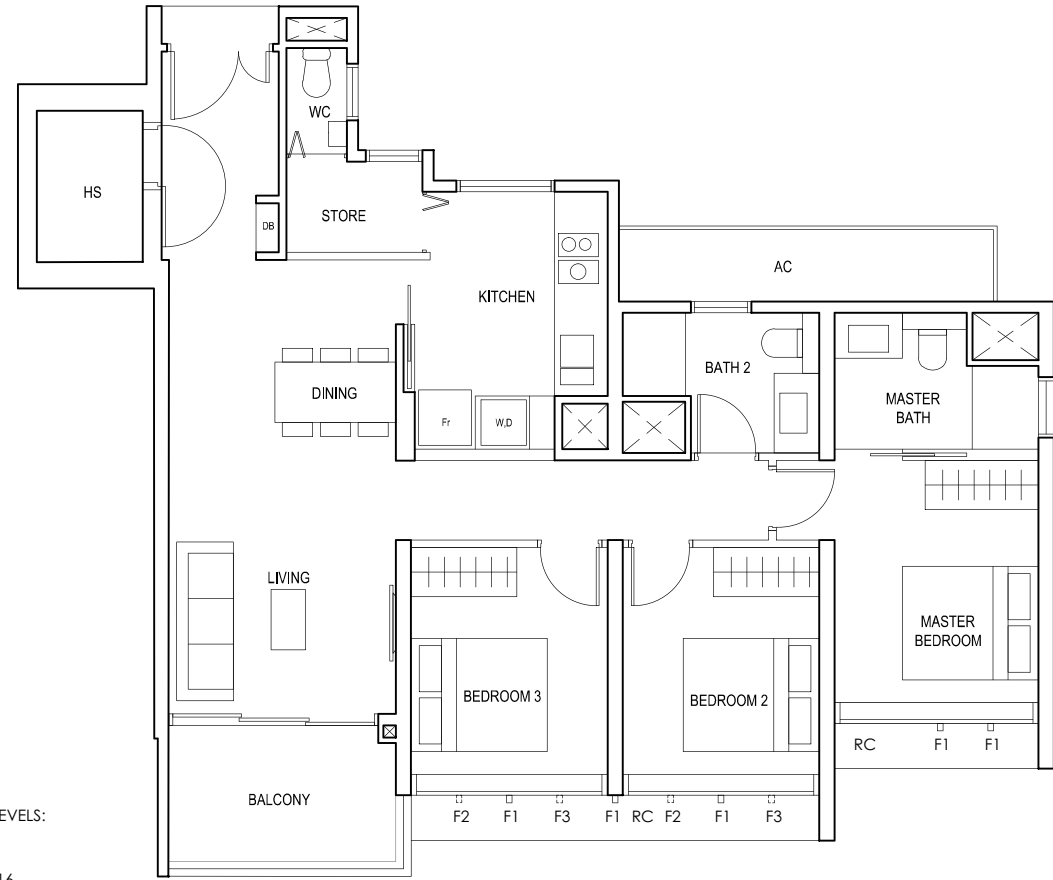
* AREA INCLUDES AIRCON (AC) LEDGE, BALCONY AND PRIVATE ENCLOSED SPACE (PES).
* THE BALCONY/PRIVATE ENCLOSED SPACE (PES) SHALL NOT BE ENCLOSED UNLESS WITH THE APPROVED BALCONY/PES SCREEN. FOR AN ILLUSTRATION OF THE APPROVED BALCONY/PES SCREEN, PLEASE REFER TO THE DIAGRAM ANNEXED HERETO AS "ANNEXURE 1".



3-BEDROOM PREMIUM

TYPE (3Y)d

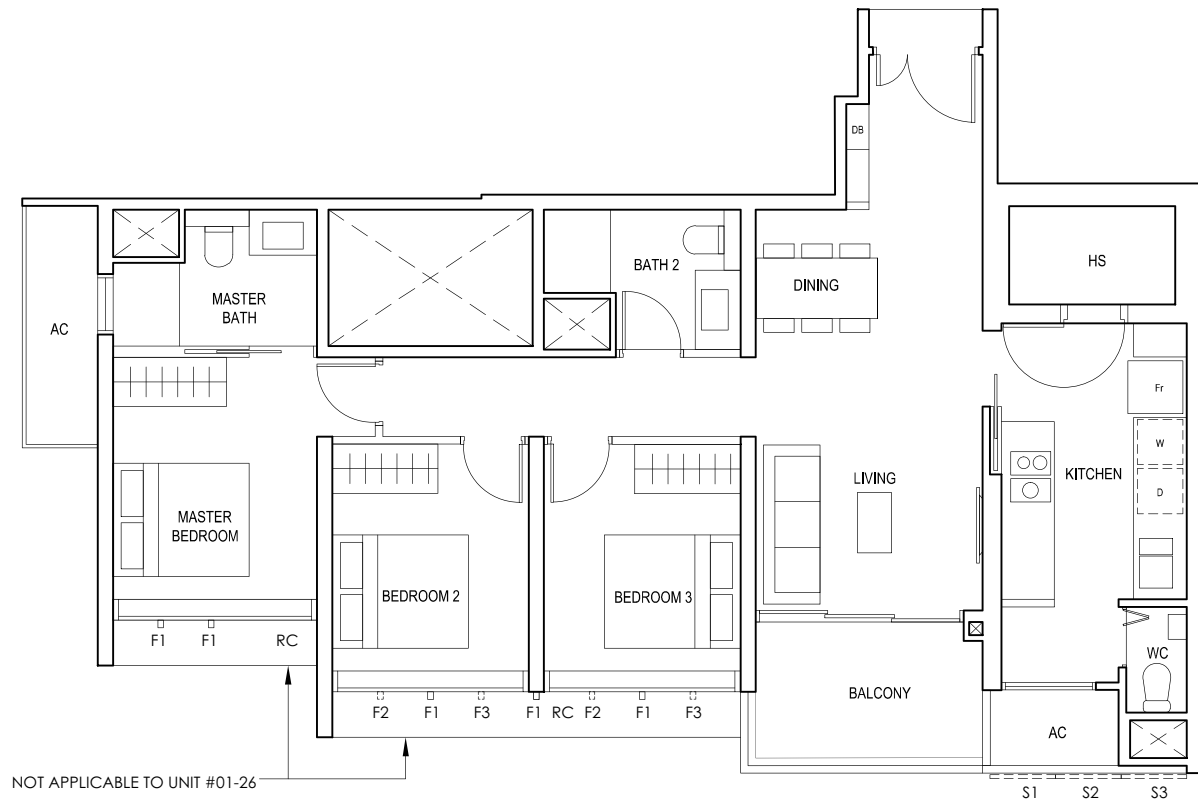
#03-34 to #17-34
99 sq m



FULL HEIGHT ALUMINIUM FIN LOCATED AT LEVELS:
F1 - #03 to #17
F2 - #05, #06, #09, #10, #13, #14, #17
F3 - #03, #04, #07, #08, #11, #12, #15 & #16

TYPE (3Y)e

#01-26 to #18-26
97 sq m



NOT APPLICABLE TO UNIT #01-26

FULL HEIGHT ALUMINIUM PERFORATED SCREEN LOCATED AT LEVELS:
S1 - #01, #02, #03, #05, #06, #07, #09, #10, #11, #13, #14, #15, #17 & #18
S2 - #02, #04, #06, #08, #10, #12, #14, #16 & #18
S3 - #01, #03, #04, #05, #07, #08, #09, #11, #12, #13, #15, #16, #17

FULL HEIGHT ALUMINIUM FIN LOCATED AT LEVELS:
F1 - #01 to #18
F2 - #01, #02, #05, #06, #09, #10, #13, #14, #17 & #18
F3 - #03, #04, #07, #08, #11, #12, #15 & #16

LEGEND:
Fr - FRIDGE DB - DISTRIBUTION BOARD WC - WATER CLOSET W - WASHER D - DRYER
AC - AIRCON LEDGE RC - REINFORCED CONCRETE LEDGE HS - HOUSEHOLD SHELTER

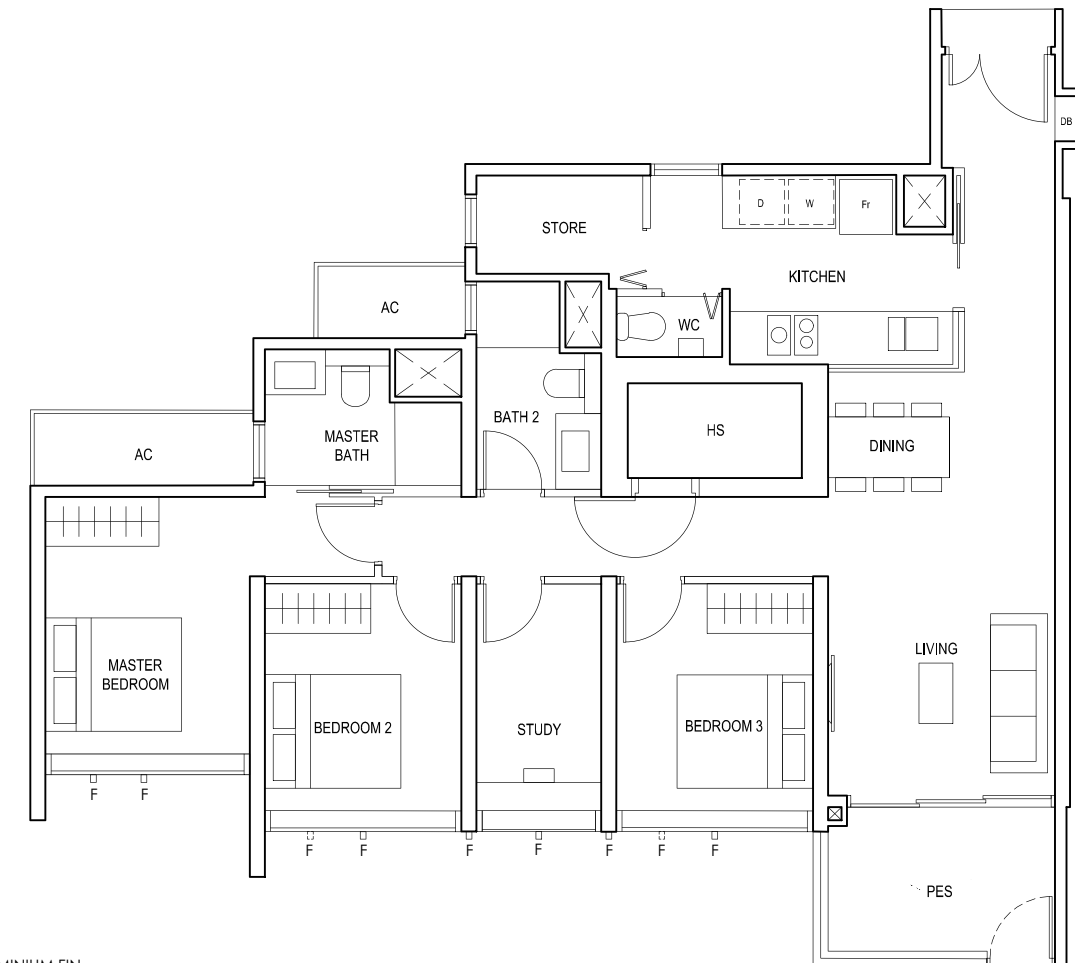
* AREA INCLUDES AIRCON (AC) LEDGE, BALCONY AND PRIVATE ENCLOSED SPACE (PES).
* THE BALCONY/PRIVATE ENCLOSED SPACE (PES) SHALL NOT BE ENCLOSED UNLESS WITH THE APPROVED BALCONY/PES SCREEN. FOR AN ILLUSTRATION OF THE APPROVED BALCONY/PES SCREEN, PLEASE REFER TO THE DIAGRAM ANNEXED HERETO AS "ANNEXURE 1".



3-BEDROOM (with Study)

TYPE (3+1)a1

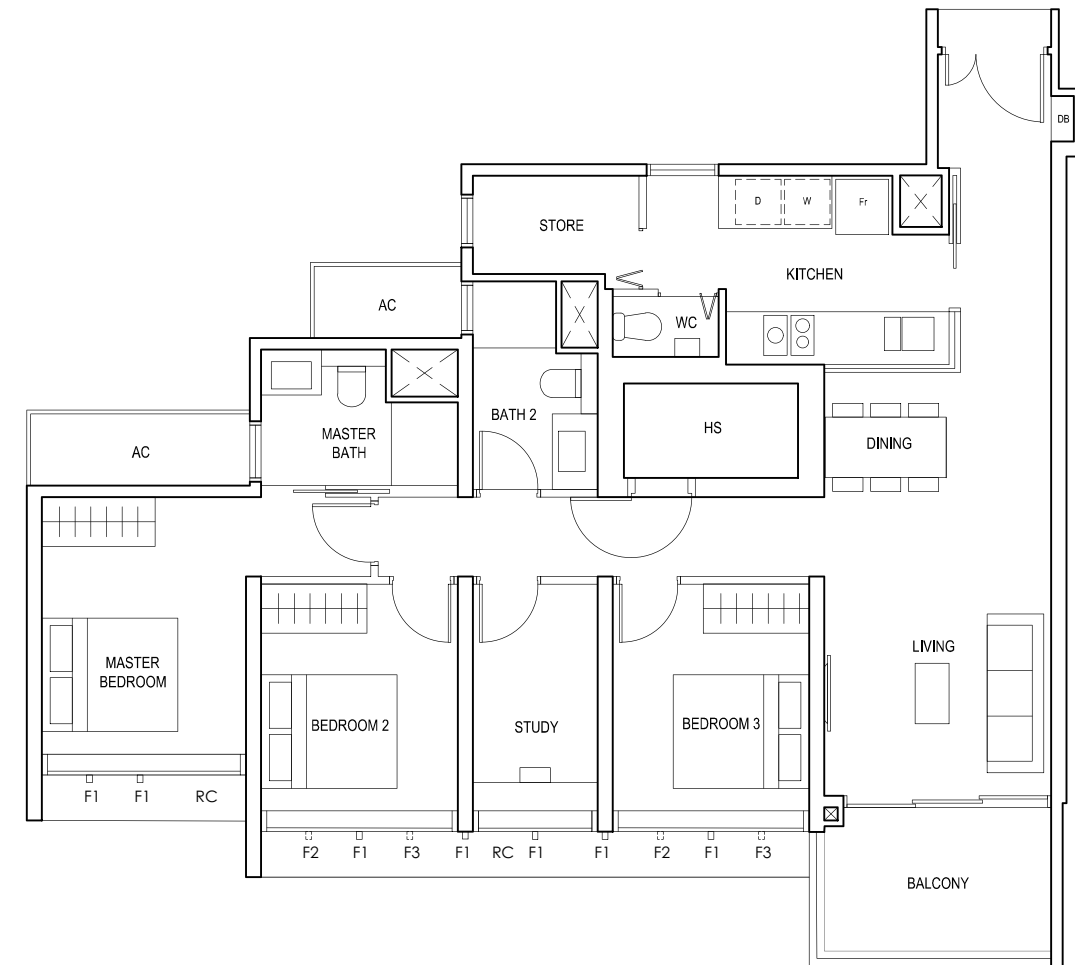
#01-07
110 sq m



F - FULL HEIGHT ALUMINIUM FIN

TYPE (3+1)a

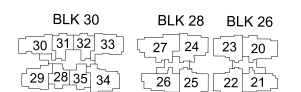
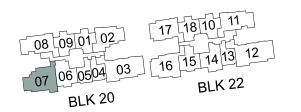
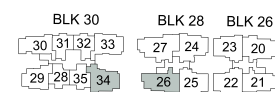
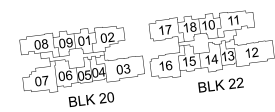
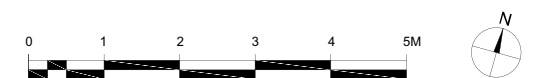
#02-07 to #18-07
110 sq m



FULL HEIGHT ALUMINIUM FIN LOCATED AT LEVELS:
F1 - #02 to #18
F2 - #02, #05, #06, #09, #10, #13, #14, #17 & #18
F3 - #03, #04, #07, #08, #11, #12, #15 & #16

LEGEND:
Fr - FRIDGE DB - DISTRIBUTION BOARD WC - WATER CLOSET W - WASHER D - DRYER
AC - AIRCON LEDGE PES - PRIVATE ENCLOSED SPACE RC - REINFORCED CONCRETE LEDGE HS - HOUSEHOLD SHELTER

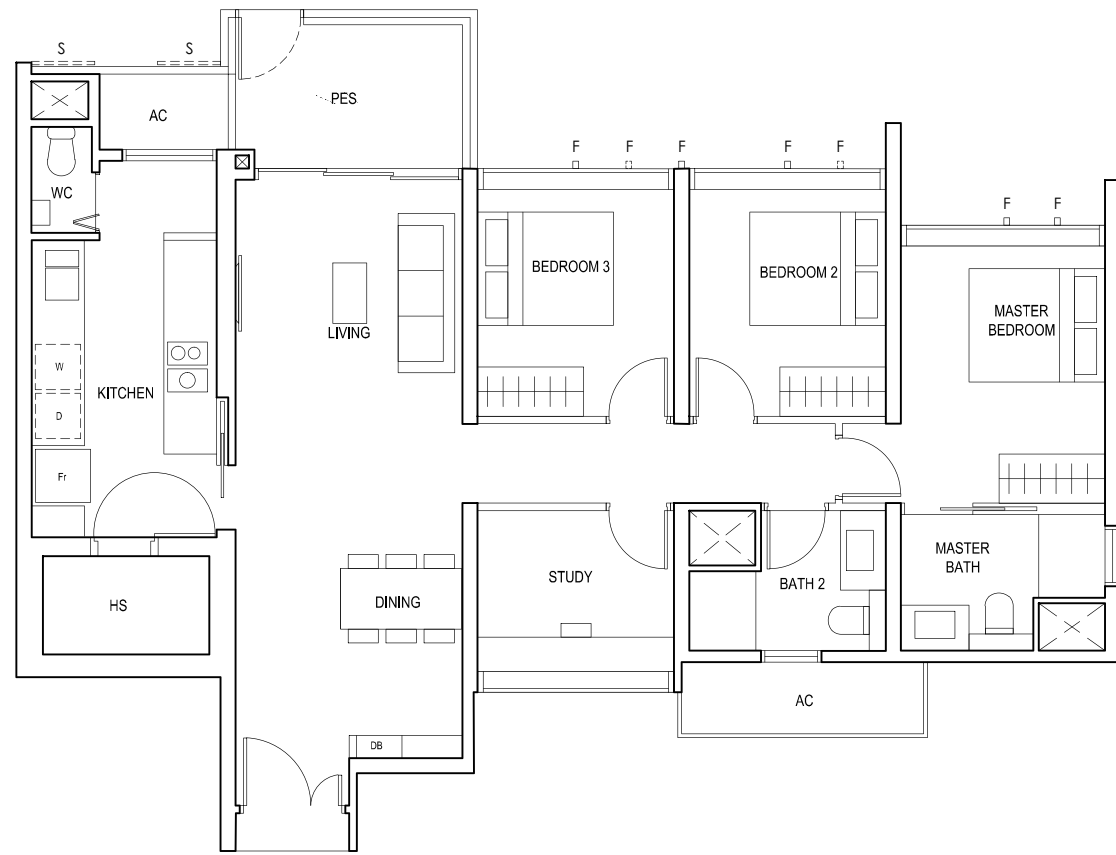
* AREA INCLUDES AIRCON (AC) LEDGE, BALCONY AND PRIVATE ENCLOSED SPACE (PES).
* THE BALCONY/PRIVATE ENCLOSED SPACE (PES) SHALL NOT BE ENCLOSED UNLESS WITH THE APPROVED BALCONY/PES SCREEN. FOR AN ILLUSTRATION OF THE APPROVED BALCONY/PES SCREEN, PLEASE REFER TO THE DIAGRAM ANNEXED HERETO AS "ANNEXURE 1".



3-BEDROOM (with Study)

TYPE (3+1)b1

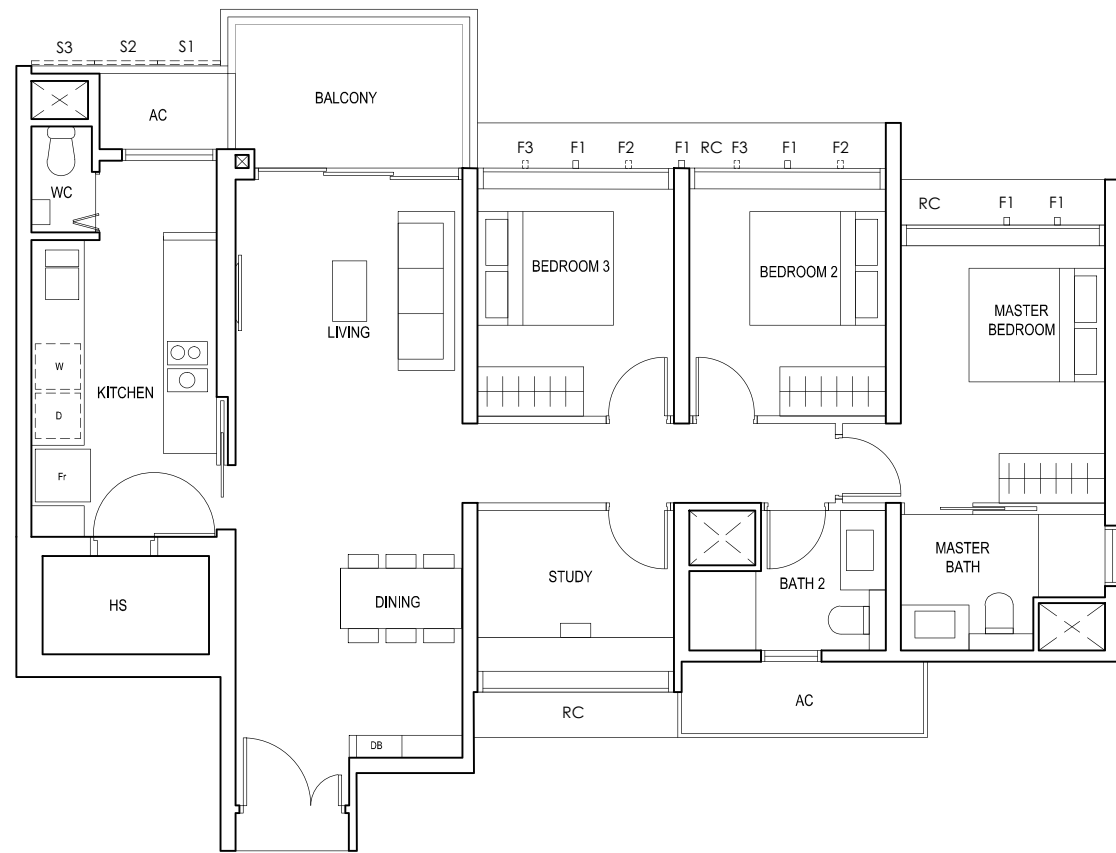
#01-20
110 sq m



S - FULL HEIGHT ALUMINIUM PERFORATED SCREEN
F - FULL HEIGHT ALUMINIUM FIN

TYPE (3+1)b

#02-20 to #18-20
110 sq m

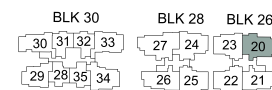
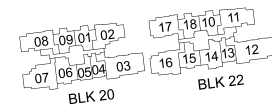


FULL HEIGHT ALUMINIUM PERFORATED SCREEN LOCATED AT LEVELS:
S1 - #02, #03, #05, #06, #07, #09, #10, #11, #13, #14, #15, #17 & #18
S2 - #02, #04, #06, #08, #10, #12, #14, #16 & #18
S3 - #03, #04, #05, #07, #08, #09, #11, #12, #13, #15, #16, #17

FULL HEIGHT ALUMINIUM FIN LOCATED AT LEVELS:
F1 - #02 to #18
F2 - #02, #05, #06, #09, #10, #13, #14, #17 & #18
F3 - #03, #04, #07, #08, #11, #12, #15 & #16

LEGEND:
Fr - FRIDGE DB - DISTRIBUTION BOARD WC - WATER CLOSET W - WASHER D - DRYER
AC - AIRCON LEDGE PES - PRIVATE ENCLOSED SPACE RC - REINFORCED CONCRETE LEDGE HS - HOUSEHOLD SHELTER

* AREA INCLUDES AIRCON (AC) LEDGE, BALCONY AND PRIVATE ENCLOSED SPACE (PES).
* THE BALCONY/PRIVATE ENCLOSED SPACE (PES) SHALL NOT BE ENCLOSED UNLESS WITH THE APPROVED BALCONY/PES SCREEN. FOR AN ILLUSTRATION OF THE APPROVED BALCONY/PES SCREEN, PLEASE REFER TO THE DIAGRAM ANNEXED HERETO AS "ANNEXURE 1".



3-BEDROOM (with Study)

TYPE (3+1)c1

#01-24
109 sq m



F - FULL HEIGHT ALUMINIUM FIN

TYPE(3+1)c

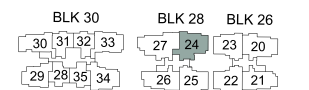
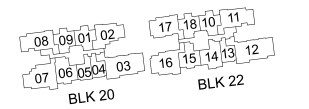
#02-24 to #18-24
109 sq m



FULL HEIGHT ALUMINIUM FIN LOCATED AT LEVELS:
F1 - #02 to #18
F2 - #02, #05, #06, #09, #10, #13, #14, #17 & #18
F3 - #03, #04, #07, #08, #11, #12, #15 & #16

LEGEND:
Fr - FRIDGE DB - DISTRIBUTION BOARD WC - WATER CLOSET W - WASHER D - DRYER
AC - AIRCON LEDGE PES - PRIVATE ENCLOSED SPACE RC - REINFORCED CONCRETE LEDGE HS - HOUSEHOLD SHELTER

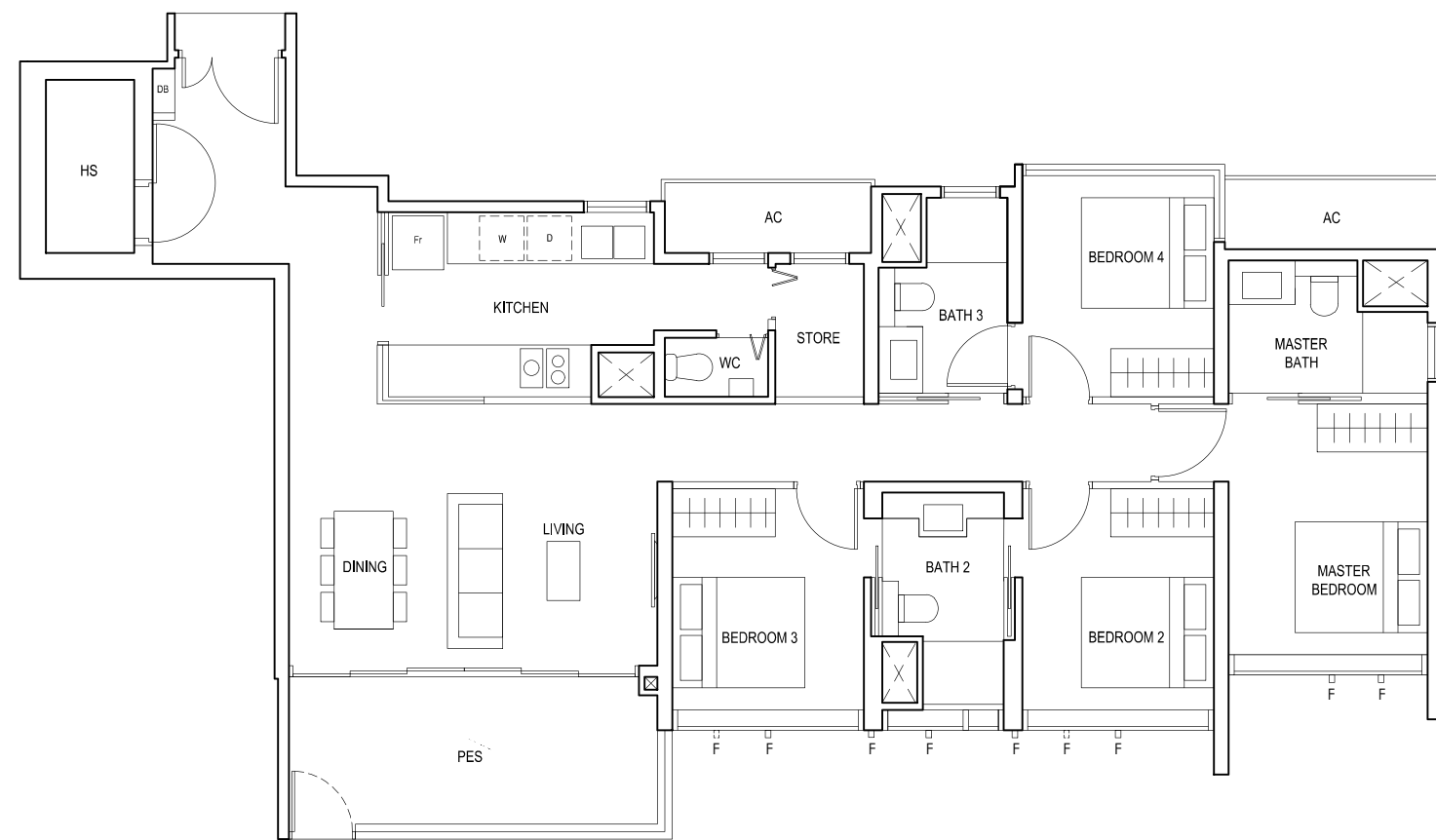
* AREA INCLUDES AIRCON (AC) LEDGE, BALCONY AND PRIVATE ENCLOSED SPACE (PES).
* THE BALCONY/PRIVATE ENCLOSED SPACE (PES) SHALL NOT BE ENCLOSED UNLESS WITH THE APPROVED BALCONY/PES SCREEN. FOR AN ILLUSTRATION OF THE APPROVED BALCONY/PES SCREEN, PLEASE REFER TO THE DIAGRAM ANNEXED HERETO AS "ANNEXURE 1".



4-BEDROOM

TYPE (4)a1

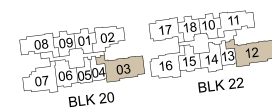
#01-03
#01-12
129 sq m



F - FULL HEIGHT ALUMINIUM FIN

LEGEND:
Fr - FRIDGE DB - DISTRIBUTION BOARD WC - WATER CLOSET W - WASHER D - DRYER
AC - AIRCON LEDGE PES - PRIVATE ENCLOSED SPACE HS - HOUSEHOLD SHELTER

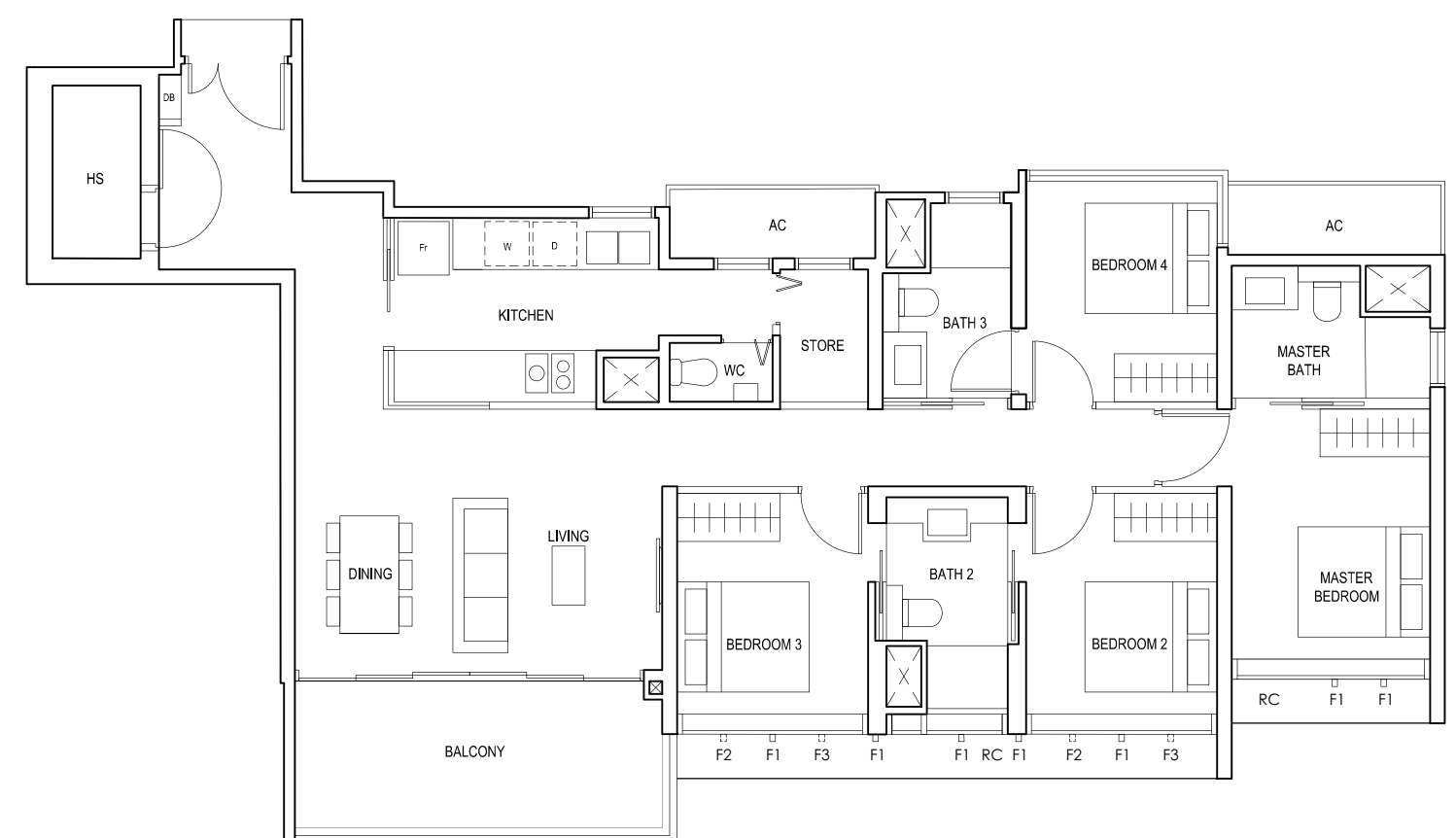
* AREA INCLUDES AIRCON (AC) LEDGE, BALCONY AND PRIVATE ENCLOSED SPACE (PES).
* THE BALCONY/PRIVATE ENCLOSED SPACE (PES) SHALL NOT BE ENCLOSED UNLESS WITH THE APPROVED BALCONY/PES SCREEN. FOR AN ILLUSTRATION OF THE APPROVED BALCONY/PES SCREEN, PLEASE REFER TO THE DIAGRAM ANNEXED HERETO AS "ANNEXURE 1".



4-BEDROOM

TYPE(4)a

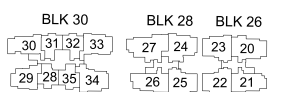
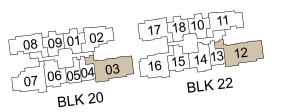
#02-03 to #18-03
#02-12 to #18-12
129 sq m



FULL HEIGHT ALUMINIUM FIN LOCATED AT LEVELS:
F1 - #02 to #18
F2 - #02, #05, #06, #09, #10, #13, #14, #17 & #18
F3 - #03, #04, #07, #08, #11, #12, #15 & #16

LEGEND:
Fr - FRIDGE DB - DISTRIBUTION BOARD WC - WATER CLOSET W - WASHER D - DRYER
AC - AIRCON LEDGE RC - REINFORCED CONCRETE LEDGE HS - HOUSEHOLD SHELTER

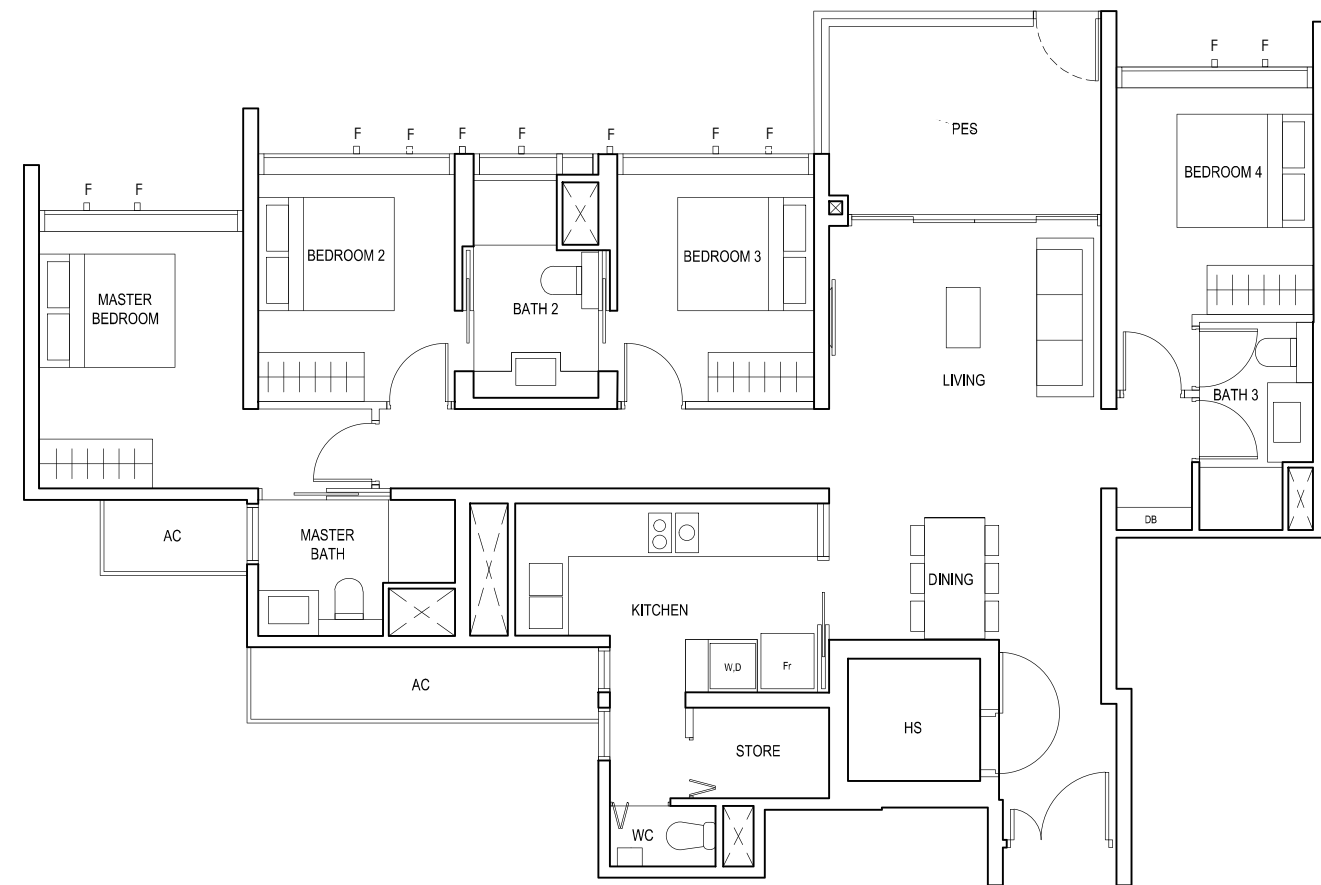
* AREA INCLUDES AIRCON (AC) LEDGE, BALCONY AND PRIVATE ENCLOSED SPACE (PES).
* THE BALCONY/PRIVATE ENCLOSED SPACE (PES) SHALL NOT BE ENCLOSED UNLESS WITH THE APPROVED BALCONY/PES SCREEN. FOR AN ILLUSTRATION OF THE APPROVED BALCONY/PES SCREEN, PLEASE REFER TO THE DIAGRAM ANNEXED HERETO AS "ANNEXURE 1".



4-BEDROOM

TYPE(4)b1

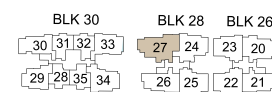
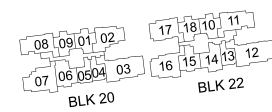
#01-27
130 sq m



F - FULL HEIGHT ALUMINIUM FIN

LEGEND:
Fr - FRIDGE DB - DISTRIBUTION BOARD WC - WATER CLOSET W - WASHER D - DRYER
AC - AIRCON LEDGE PES - PRIVATE ENCLOSED SPACE HS - HOUSEHOLD SHELTER

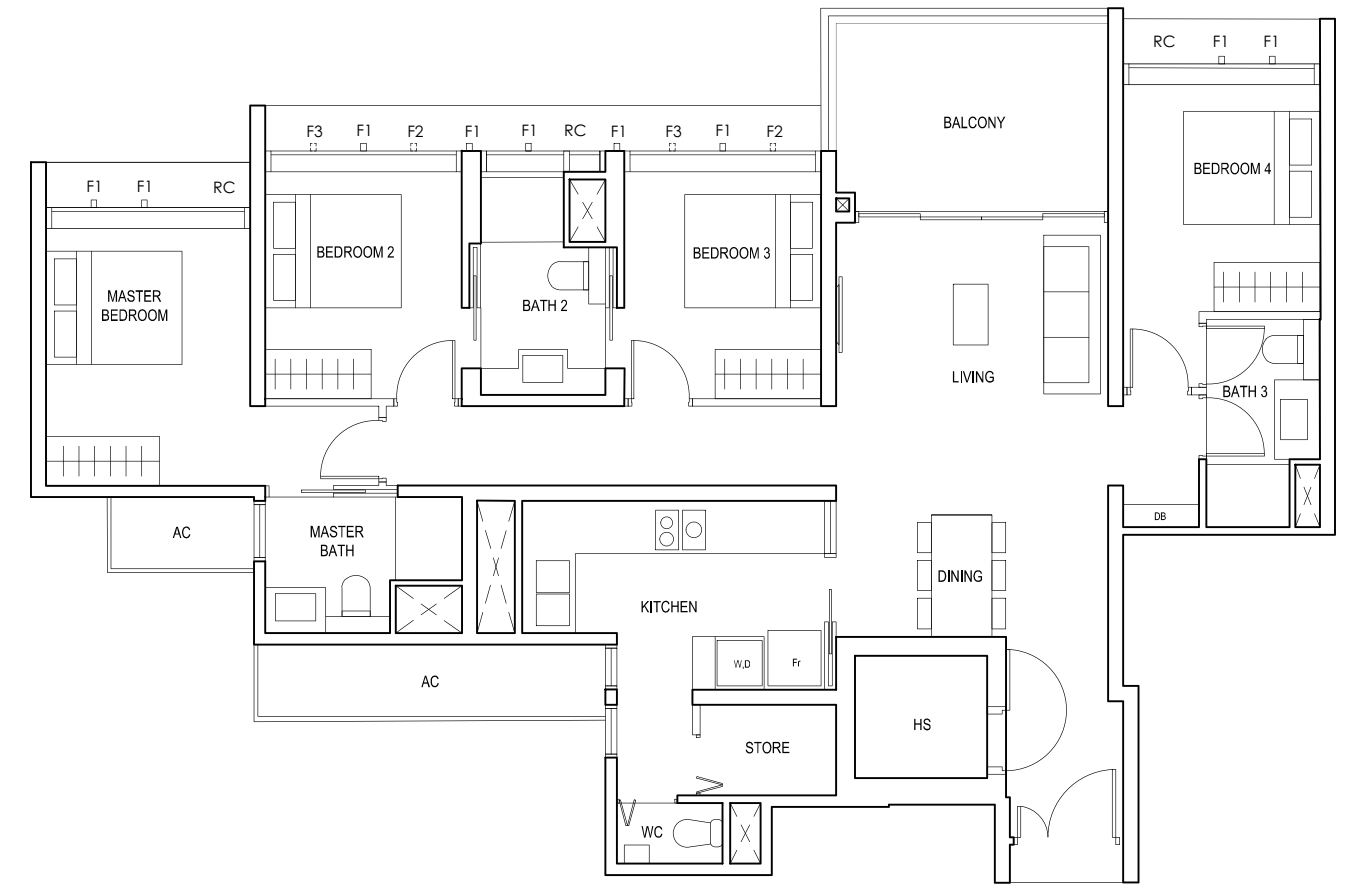
* AREA INCLUDES AIRCON (AC) LEDGE, BALCONY AND PRIVATE ENCLOSED SPACE (PES).
* THE BALCONY/PRIVATE ENCLOSED SPACE (PES) SHALL NOT BE ENCLOSED UNLESS WITH THE APPROVED BALCONY/PES SCREEN. FOR AN ILLUSTRATION OF THE APPROVED BALCONY/PES SCREEN, PLEASE REFER TO THE DIAGRAM ANNEXED HERETO AS "ANNEXURE 1".



4-BEDROOM

TYPE(4)b

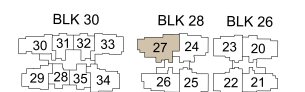
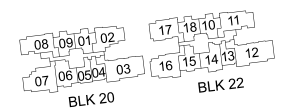
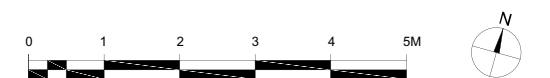
#02-27 to #18-27
130 sq m



FULL HEIGHT ALUMINIUM FIN LOCATED AT LEVELS:
F1 - #02 to #18
F2 - #02, #05, #06, #09, #10, #13, #14, #17 & #18
F3 - #03, #04, #07, #08, #11, #12, #15 & #16

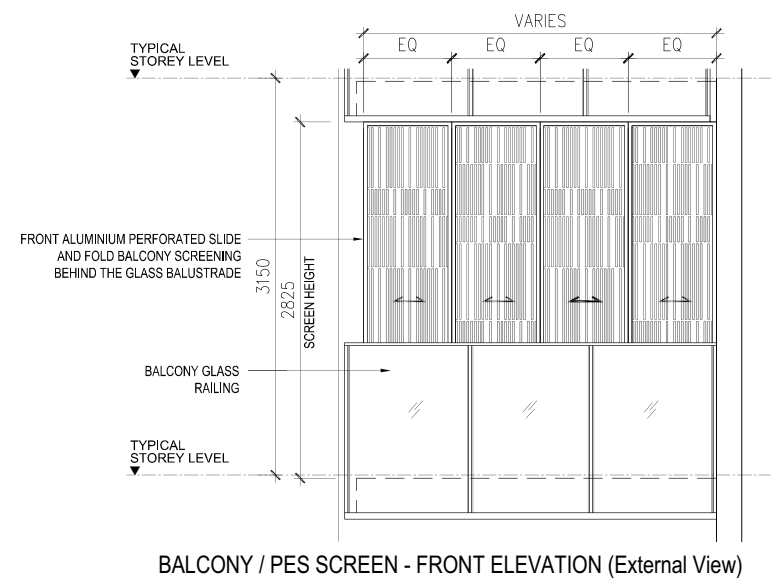
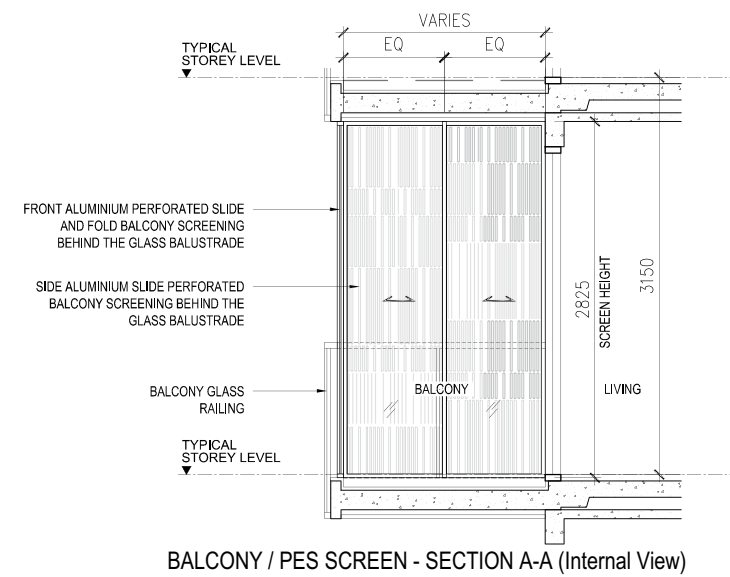
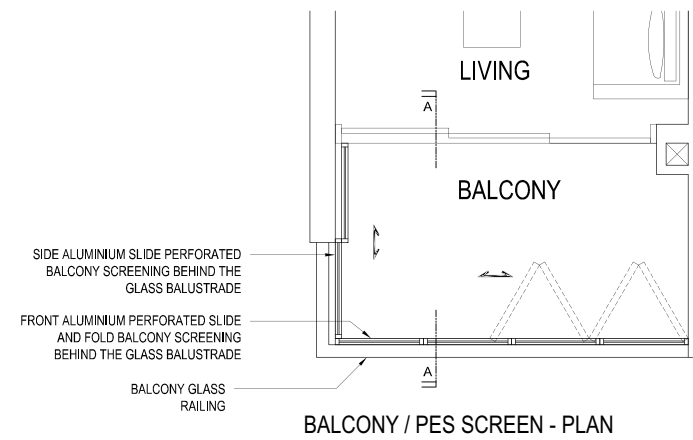
LEGEND:
Fr - FRIDGE DB - DISTRIBUTION BOARD WC - WATER CLOSET W - WASHER D - DRYER
AC - AIRCON LEDGE RC - REINFORCED CONCRETE LEDGE HS - HOUSEHOLD SHELTER

* AREA INCLUDES AIRCON (AC) LEDGE, BALCONY AND PRIVATE ENCLOSED SPACE (PES).
* THE BALCONY/PRIVATE ENCLOSED SPACE (PES) SHALL NOT BE ENCLOSED UNLESS WITH THE APPROVED BALCONY/PES SCREEN. FOR AN ILLUSTRATION OF THE APPROVED BALCONY/PES SCREEN, PLEASE REFER TO THE DIAGRAM ANNEXED HERETO AS "ANNEXURE 1".



ANNEXURE 1

APPROVED SCREEN FOR BALCONY AND PRIVATE ENCLOSED SPACE (PES)



- NOTES:
1. THE BALCONY / PES SHALL NOT BE ENCLOSED UNLESS WITH THE APPROVED SCREEN AS SHOWN ABOVE ("APPROVED SCREEN");
 2. BALCONY/ PES SCREEN IS NOT PROVIDED. THE COST OF SCREEN AND INSTALLATION OF THE APPROVED SCREEN SHALL BE BORNE BY THE PURCHASER; AND
 3. ON-SITE VERIFICATION IS NECESSARY TO OBTAIN ACTUAL MEASUREMENTS PRIOR TO FABRICATION AND INSTALLATION OF THE APPROVED SCREEN.

EQ - EQUIDISTANT

MARK OF PRECISION



Hong Leong Holdings Limited (HLHL) was established in 1968 as the privately-held property development and investment arm of the Hong Leong Group.

As one of the pioneers of the real estate scene in Singapore, HLHL has since emerged as a major player in the property market. As a forward-looking developer that continues to pursue improvement and expansion while maintaining its high design, customer service and sustainability standards, HLHL takes pride in being responsible for some of the most distinctive and iconic residential developments in Singapore.



City Developments Limited (CDL) is a leading global real estate company with a network spanning 106 locations in 29 countries and regions. Listed on the Singapore Exchange, the Group is one of the largest companies by market capitalisation. Its income-stable and geographically-diverse portfolio comprises residences, offices, hotels, serviced apartments, shopping malls and integrated developments.

With a proven track record of over 55 years of experience in real estate development, investment and management, the Group has developed over 46,000 homes and owns over 24 million square feet of gross floor area in residential, commercial and hospitality assets globally. Along with its London-based hotel arm, Millennium & Copthorne Hotels Limited (M&C), the Group has 156 hotels and 45,000 rooms worldwide, many in key gateway cities.



A joint venture between Hong Leong Holdings Limited (UEN. 196800290Z) and City Developments Limited (UEN. 196300316Z)

Developer: NovaSims Development Pte. Ltd. (UEN. 201912247D) • Developer's Licence No.: C1367 • Tenure of Land: Leasehold (99 years lease commencing from 3 July 2019) • Encumbrances: Mortgage in favour of DBS Bank Ltd. • Date of Notice of Vacant Possession under the Sale and Purchase Agreement: No later than 1 October 2025 • Expected Date of Legal Completion: No later than 1 October 2028 or 3 years after the Date of Delivery of Vacant Possession, whichever is the earlier • Lot No. & Location: Lot 11029X MK 24 at Sims Drive

While every reasonable care has been taken in preparing this brochure, the developer cannot be held responsible for any inaccuracies. All statements are believed to be correct but are not to be regarded as statement or representation of facts. Visual representations, illustrations, photographs and renderings are intended to portray only impressions of the development. All information and specifications are current at the time of press and are subject to change as may be required and cannot form part of an offer or contract.

